

BID MANUAL

COUNTY ROAD 229 Widening and Resurfacing Project

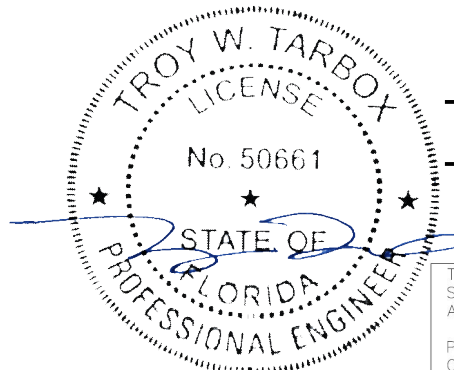
Baker County Project No.
2025-16

Issued:
January 15, 2026



On Behalf of:

Board of County Commissioners
Baker County, Florida
55 North Third Street
Macclenny, FL 32087



Troy W
Tarbox

Digitally signed by
Troy W Tarbox
Date: 2026.01.12
11:11:10 -05'00'

THIS ITEM HAS BEEN ELECTRONICALLY SIGNED AND
SEALED BY TROY W. TARBOX, P.E. ON THE DATE
ADJACENT TO THE SEAL.

PRINTED COPIES OF THIS DOCUMENT ARE NOT
CONSIDERED SIGNED AND SEALED AND THE SIGNATURE
MUST BE VERIFIED ON ANY ELECTRONIC COPIES.

**ADVERTISEMENT FOR BIDS
BAKER COUNTY BOARD OF COUNTY COMMISSIONERS
BAKER COUNTY PROJECT NO. 2025-16**

BAKER COUNTY WILL RECEIVE BIDS FOR THE FOLLOWING:

**Widening and resurfacing of CR 229 N from Verdie Dorman Rd to 3.9 miles
north of Verdie Dorman Rd**

Date of Advertisement:	January 15, 2026
Deadline for Questions:	February 5, 2026, 5:00 PM, LOCAL TIME Send all questions via email to troy@tarboxinc.com
Date & Time for Receiving Bids:	11:00 AM, LOCAL TIME February 19, 2026 Late bids will not be considered.
Date & Time for Bid Opening:	February 19, 2026 at 11:01 AM
Place for Receiving Bids:	Baker County Administration Bldg. 55 North Third Street Macclenny, FL 32063
Bid Documents Available From:	https://www.bakercountyfl.org/purchasing.php
Project Description:	Widening and resurfacing existing lanes on CR 229N from Verdie Dorman Rd to 3.9 miles N of Verdie Dorman Rd. Segment 1: mill, overlay and widen +/-2.985 miles; and, Segment 2: full depth reclamation and widen +/-0.997 miles. Construct guardrail system, culvert extensions, pave dirt side roads and driveway turnouts, traffic signs and traffic paint/markings.

BAKER COUNTY BOARD OF COUNTY COMMISSIONERS
SARA LITTLE, COUNTY MANAGER

TABLE OF CONTENTS

ADVERTISEMENT FOR BIDS	i
------------------------------	---

TABLE OF CONTENTS	ii
-------------------------	----

GENERAL PROVISIONS FOR ROAD CONSTRUCTION	1
--	---

A. Bid Solicitation	1
B. General Scope of Work	2
C. Bidder Qualifications	3
D. Pre-Bid Conference	3
E. Insurance Requirements	3
F. Bid Documents	4
G. Examination of Project Site and Bid Documents	5
H. Bid Preparation	6
I. Bid Submittal	6
J. Bid Security	7
K. Modification and Withdrawal of Bid	7
L. Opening of Bids	7
M. Contract Award and Execution	7
N. Pre-Construction Conference	9
O. Supervision	9
P. Contract Time	10
Q. Liquidated Damages	10
R. Construction Methods and Provisions	10
S. Contract Administration and Project Closeout	10
T. Measurement and Payment	12

APPENDICES

A. Bid Forms	A
B. Geotechnical Engineering Investigation	B
C. Engineer's Estimate of Material Quantities	C
D. Example Contract and Contract Bond Form	D
E. Supplemental Specifications	E

GENERAL PROVISIONS FOR ROAD CONSTRUCTION

County Road 229 - Widening and Resurfacing Project
Baker County Project No. 2025-16

A. BID SOLICITATION

1. BAKER COUNTY
WILL RECEIVE BIDS FOR THE FOLLOWING:
County Road 229 - Widening and Resurfacing Project
Baker County Project Number 2025-16

Date of Advertisement: January 15, 2026

Deadline for Questions: February 5, 2026, 5:00 PM local time

Bids to be received By: February 19, 2026, 11:00 AM local time (Bid Date)
(Late bids will not be considered)

Bids to be received At: Baker County Administration Building
55 North Third Street
Macclenny, FL 32063

Bid Package Label: **Date:** (to be filled in by Baker County) _____
Time: (to be filled in by Baker County) _____
Project: **CR229 – Widening and Resurfacing Project**
Baker County Project Number: 2025-16
Bidder: (Bidder's Company to be filled in by Bidder) _____

Public Bid Opening: February 19, 2025 at 11:01 AM
Baker County Administration Building

Bid Manual, Bid Plans and Bid Tabulation Forms are available for download at:
<http://www.bakercountyfl.org/purchasing.php>
CR229_BID_MANUAL_2026-01-15.pdf
CR229_BID_PLANS_2026-01-15.pdf
CR229_BID_TABFORM_2026-01-15.xlsx; and
CR229_BID_TABFORM_2026-01-15.pdf;

Contact for Questions: Tarbox Consulting and Design, Inc.
troy@tarboxinc.com

Road Name: County Road 229
From just south of Verdie Dorman Road north
approximately 3.982 miles to a location just north of the
Osceola National Forest's southern boundary line.

Project Description: Segment 1: mill, overlay and widen ± 2.985 miles; and,
Segment 2: full-depth reclamation and widen ± 0.997
miles. Construct guardrail system, culvert extensions,
pave dirt side roads and driveway turnouts, traffic signs
and traffic paint/markings.

2. Bid Documents will be available to the public for inspection only at the County Administration Building, 55 North Third Street, Macclenny, FL 32063.
3. FDOT Standard Index and Standard Plans can be downloaded from FDOT's website, using the following URL links, respectively (subject to change):

<http://www.fdot.gov/programmanagement/Implemented/SpecBooks/>

<http://www.fdot.gov/roadway/designstandards/standards.shtml>

If there are any problems accessing the Bid Documents, please contact:

Tarbox Consulting and Design, Inc.
3654 Rubin Road
Jacksonville, Florida, 32257
Telephone: (904) 399-1785
Email: troy@tarboxinc.com

B. GENERAL SCOPE OF WORK

1. This Project consists of furnishing all needed materials, equipment, labor and supervision for new construction and improvements for approximately 21,025 LF (3.982 miles) of an existing 2-lane, low-volume rural roadway. The Project will be bid for a Base Bid scope of work; however bid substitutions and bid deductions may be required to meet project budget limits.

It is the intention that the Base Bid will include all work. Bid substitutions change typical section details but will not reduce the scope of work. Bid deductions will reduce the scope of work with the work for the deducted items to be completed by Baker County forces.

2. The governing standards and specifications are the latest editions of the Florida Department of Transportation (FDOT) Standard Plans for Road Construction (FDOT Standard Index) and Standard Specifications For Road and Bridge Construction (FDOT Standard Specifications), with exceptions/additions specified in the Bid Documents.
3. When the FDOT Standard Plans and Standard Specifications refer to the State of Florida, or its officials, it shall be interpreted as the Baker County Board of County Commissioners (County) or their authorized representative (County Representative), respectively.

C. BIDDER QUALIFICATIONS

1. Bidder must be a contractor pre-qualified by the FDOT in accordance with Florida Statute 337.14 (1) and Rule Chapter 14-22, F.A.C.
2. The Bidder shall not be listed on the List of Parties Excluded from Federal Procurement and Non-procurement Programs, which identifies those parties excluded throughout the U.S. Government from receiving Federal contracts or certain subcontracts and from certain types of Federal financial and nonfinancial assistance and benefits.

D. PRE-BID CONFERENCE

1. There will be no pre-bid conference for this project.

E. INSURANCE REQUIREMENTS

1. Contractor shall maintain, at a minimum, the following insurance coverage, for the duration of the Project and the Warranty Period.

(1) Certificate of Insurance (COI):

Contractors submitting bids shall provide the County a Certificate of Insurance (COI), or a letter from their insurance company stating that the required coverage is obtainable.

Contractor shall not commence any work in connection with the Agreement until Contractor has obtained all of the following types of insurance and such insurance has been approved by the County. Nor shall the Contractor allow any subcontractor to commence any work until all similar insurance for the subcontractor has been so obtained and approved. All insurance policies shall be with qualified Insurers doing business in Florida.

(2) Worker's Compensation Insurance:

Contractor shall take out and maintain, during the life of the Agreement, Worker's Compensation Insurance for all of the Contractor's employees connected with the work of this Project and, in case any work is sublet, the Contractor shall require the subcontractor similarly to provide Worker's Compensation Insurance for all of the latter's employees, unless such employees are covered by the protection afforded by the Contractor. Such insurance shall comply fully with the Florida Worker's Compensation Law, Chapter 440, Florida Statutes. In case any class of employees engaged in hazardous work under this contract at the Project Site is not protected under the Workmen's Compensation statute, the Contractor shall provide, and cause each subcontractor to Provide, adequate insurance, satisfactory to

the County, for the protection of his employees not otherwise protected.

(3) **Commercial General Liability Insurance:**

The Contractor shall take out and maintain, during the life of the Agreement, COMPREHENSIVE GENERAL LIABILITY, COMPREHENSIVE AUTOMOBILE LIABILITY, CONTRACTUAL LIABILITY AND PRODUCTS AND COMPLETED OPERATIONS LIABILITY INSURANCE. These Policies shall protect Contractor from claims for damage for personal injury, including accidental death, as well as claims for property damages, which may arise from operations under the Agreement whether such operations are by Contractor or by anyone directly, or indirectly employed by Contractor.

1. Bodily Liability: \$1,000,000 / claimant
\$2,000,000 / occurrence
2. Personal Injury Liability: \$1,000,000 / claimant
\$2,000,000 / occurrence
3. Automobile Bodily Injury & \$1,000,000
Property Damage Liability:
4. Property Damage Liability: \$1,000,000 / claimant
(other than automobile) \$2,000,000 / occurrence

(4) **Additional Insurance Requirements:**

1. Additional Insured:
Contractor's COI shall endorse County as an "Additional Insured", with coverage to include products and completed operations.

F. BID DOCUMENTS

1. The following documents shall hereinafter be referred to as "Bid Documents":
 - (a) **Bid Manual:** County Road 229 - Widening and Resurfacing Project (dated January 15, 2026), hereinafter to be referred to as "Bid Manual."
 - (b) **Bid Forms:** All documents in **Appendix A** "Bid Forms", and as specified on the Bid Checklist in Appendix A of this Bid Manual, along with a Bid Bond surety as specified on the Bid Bond form.
 - (c) **Bid Plans:** County Road 229 - Widening and Resurfacing Project (dated January 15, 2026), hereinafter to be referred to as "Bid Plans."
 - (d) **FDOT Standard Index:** "Design Standards, For Design, Construction, Maintenance and Utility Operations on the State Highway System" (FDOT, latest edition).

- (e) **FDOT Specifications:** "Standard Specifications for Road and Bridge Construction" (FDOT, latest edition).
- (f) **Supplemental Specifications:** As may be provided in appendices of this Bid Manual.
- (g) **Addendum(s):** Revisions to any of the above referenced documents shall represent "Addendums" and shall become part of the Bid Documents.

G. EXAMINATION OF PROJECT SITE AND BID DOCUMENTS

1. Bidders shall visit the Project Site and become familiar with the nature and extent of work to be performed and the local conditions that may affect the work.
2. The Bid Documents were prepared to depict an essentially accurate representation of existing conditions, interpreted from available information on the Project Site. The Bidder is not relieved, however, of the responsibility of becoming fully informed as to existing conditions at the Project Site.
3. Bidders are advised that a limited geotechnical engineering investigation was performed for this Project. The investigation, provided in **Appendix B** of this Bid Manual, was completed to assess the condition of the existing pavement. Bidder may elect to complete their own soils investigation prior to Bid, in order to identify conditions that may affect the Work.
4. Questions regarding the condition of the Project Site or the Bid Documents shall be directed, in writing to the Engineer of Record:

Tarbox Consulting and Design, Inc.
3654 Rubin Road
Jacksonville, Florida, 32257
Telephone: (904) 399-1785
Email: troy@tarboxinc.com

Questions must be submitted no later than February 5, 2025, 5:00 pm local time.

H. BID PREPARATION

1. Complete sets of Bid Documents may be obtained as stated in the Invitation to Bid. Complete sets of Bid Documents shall be used by Bidders in preparation of their Bid. Neither the County nor the Engineer assumes responsibility for errors or misinterpretations resulting from the use of an incomplete set of Bid Documents.
2. In preparing a Bid, the Contractor shall do so with the understanding that all materials used, and all work completed, shall meet requirements as specified in the FDOT Standard Specifications and FDOT Standard Index (latest editions) with exceptions and/or additions as specified in the Bid Documents.
3. Prepare Bid on the Bid Forms provided in **Appendix A** of the Bid Manual with all blanks filled in typed, printed or otherwise written in ink.
4. Bids shall include the legal name and address of the Bidder and indicate if the Bidder is a sole proprietor, a partnership, a corporation, or some other legal entity.
5. The Total Bid Amount shall be specified as a numeral (using numeric characters) and as a number (using alphabetic characters or words) on the Bid.
6. Unit Costs and Item Costs shall be specified numerically. For any discrepancies, numeric Unit Costs shall govern for items paid for on a unit-cost basis, and numeric Item Costs shall govern for items paid for on a lump-sum basis.
7. **Appendix C** of the Bid Manual provides the Engineer's Estimate of Material Quantities for the Bidder's reference. However, neither the County nor the Engineer guarantees the accuracy of the provided estimates.
8. All quantities for materials indicated on the Bid Tabulation Form are considered approximate and may be adjusted in the field by the County Representative.
9. No provisions will be made to adjust Unit Prices.

I. BID SUBMITTAL

1. Submit **one (1) original** and **three (3) copies** of all documents listed on the Bid Checklist provided in **Appendix A** of this Bid Manual. Documents shall be submitted as specified in Section A of this Bid Manual.
2. Submit Bid at the location specified in Section A of this Bid Manual on or before the Bid Date (day and time) where the Bid package will be stamped received. Bids received after the Bid Date (time and date) will be returned unopened to the company name and return address on the Bid Envelope.

J. BID SECURITY

1. Each Bid shall be accompanied by certified or cashier's check drawn on any State or National Bank in Florida, or an acceptable Bidders Bond, payable unconditionally to the County, in an amount of five percent (5%) of the Bid amount.
2. Failure of the successful Bidder to enter into a Contract, in accordance with his Bid, or failure to furnish the required bonds, will be just cause for an annulment of the award with the amount of the bid security being forfeited to the County as liquidated damages, not as a penalty.
3. Should a Bid Bond be used, acceptable Surety companies shall be determined from the latest United States Treasury Department's list of companies holding certificates of authority as acceptable Sureties on Federal Bonds.
4. The County may retain the Bid Security of those Bidders, to whom an award may be considered, until successful execution of the Contract; until the specified time for holding bids has elapsed; or, until all Bids have been rejected.

K. MODIFICATION AND WITHDRAWAL OF BID

1. Prior to the time of bid opening, a Bidder may withdraw their Bid at any time, but, may not resubmit it. Bids may not be modified after submittal.
2. After the bid opening, no Bid may be withdrawn, canceled or modified for a period of ninety (90) days after the time and date designated as the Bid Date.

L. OPENING OF BIDS

1. Bids submitted by the Bid Date will be opened publicly and read aloud at the time and place stated in Section A of this Bid Manual.
2. The County reserves the right to postpone the date and time announced for opening of bids. Such postponement may be made at any time prior to the time announced for the opening of bids. The County will give written notice of any such postponement to each party to whom Bid Documents have been issued, followed by issuance of an addendum confirming the changing of the announced date and time for opening of bids.

M. CONTRACT AWARD AND EXECUTION

1. Until final award of a Contract, the County reserves the right to reject any and all Bids, with or without cause; to waive any informality or irregularity; or, to accept the Bid which is in the best interest of the County.

2. It is the intent of the County to award a Contract to the lowest responsible Bidder whose Bid is in conformance with the Bid Documents and does not exceed the funds available.
3. The Low Bidder shall be determined as follows:
 1. The bid with the lowest Base Bid Amount (BBA), where the BBA is less than or equal to the project budget, will be considered the Low Bid.
 2. If no BBA is less than or equal to the project budget, then an Alternate 1 Bid Amount (A1BA) will be calculated for each bid. The lowest A1BA, that is less than or equal to the project budget, will be considered the Low Bid.
 3. If no A1BA is less than or equal to the project budget, then an Alternate 2 Bid Amount (A2BA) will be calculated for each bid. Note that A2BA will include both A1 and A2 alternates unless A1BA is greater than BBA, in which case, A2BA will only include A2. The lowest A2BA, that is less than or equal to the project budget, will be considered the Low Bid.
 4. If no A2BA is less than or equal to the project budget, then A2BA will become the basis for Bid Item deductions. Bid Deductions will be subtracted from A2BA, in a cumulative manner, according to the following sequence.
 - (D1) Where the Deduction 1 Bid Amount (D1BA) = A2B2 – D1
 - (D2) Where the Deduction 2 Bid Amount (D2BA) = D1BA – D2
 - (D3) Where the Deduction 3 Bid Amount (D3BA) = D2BA – D3
 - (D4) Where the Deduction 4 Bid Amount (D4BA) = D3BA – D4
 5. Bidder agrees that, if they become the Low Bid for the A1BA or the A2BA condition, and their bid is less than the project budget, the Bidder will accept the bid award and enter into contract negotiations with County.
 6. Bidder and the County agree that, if a bidder becomes the Low Bid for any of the D# conditions, and their bid amount is less than or equal to the project budget, the Bidder is not obligated to accept a bid award and will not forfeit their Bid Security. In this case, the County may elect to award the bid to the next lowest bid, provided this bid is less than or equal to the project budget.
4. Baker County reserves the right to add or delete individual work items from the Low Bid, so long as the low bidder agrees prior to bid award. The bidder will not be required to accept a bid award for their bid with deductions.

5. Upon acceptance of a Bid, and award of a Contract, the successful Bidder shall deliver the executed Contract, along with required bonds and any other items requested, to the County within ten (10) days. Failure to do so will be deemed as a breach of agreement by the Bidder and will result in forfeiture of the Bid Security as described in this Bid Manual.
6. Failure on the part of successful Bidder to execute the Contract as required, or to perform under the Purchase Order, will be cause for annulment of the award, and, in the event of annulment of the award, the Bidder shall forfeit the Bid Bond. The award may thereafter be made to the next lowest acceptable Bidder, or, the work may be re-advertised as the County may elect.
7. Example Contract and Contract Bond Form are provided in **Appendix D** of this Bid Manual. Note that these are example documents subject to change.
8. The successful Contractor shall comply with Chapter 2010-147, Section 50, Laws of Florida, providing for preference to residents of the State of Florida.
9. Contract Documents shall include:
 - (1) **Bid Documents**
 - (2) **Contract** (executed).
 - (3) **Construction Bond Form and Bond Security.**
 - (4) **Schedule of Values**
 - (5) **Addendum(s)** to the work specified in the Bid Documents
 - (6) **Change Orders** submitted by Contractor and approved by County

N. PRE-CONSTRUCTION CONFERENCE

1. Before starting any construction work on this Project, a conference will be held at the Project Site, or in the County's office (to be determined), for the purpose of verifying general procedures, reviewing construction schedules and maintenance of traffic plans, and other items of importance.
2. Present at the conference shall be the County Representative, a responsible representative of the Contractor, Job Superintendent, major Subcontractors, Engineer and representatives of private utilities, as may be applicable.

O. SUPERVISION

1. All work performed under the Contract will be directed by the County Representative.

P. CONTRACT TIME

1. The Contract Time for this Project shall be as specified in the Bid with the Contract Time beginning 15 calendar days after the Contract is awarded to the successful Bidder by written Notice to Proceed by the County.

Q. LIQUIDATED DAMAGES

1. The County will incur financial loss if the Work is not substantially complete by the date set forth in the Bid. The Contractor shall be liable for liquidated damages as specified herein.
 - (1) The Contractor will be charged \$250.00 per day liquidated damages for each day over the specified Contract Time unless good and sufficient justification can be shown for exceeding the contract time.
2. The County will have the sole authority to wave the contract enforcement of liquidated damages, if agreed by all involved parties.

R. CONSTRUCTION METHODS AND PROVISIONS

1. All materials used and all work completed shall meet all requirements specified in the latest editions FDOT Standard Index and FDOT Standard Specifications.
2. The Contractor shall implement maintenance of traffic provisions in conformance with guidelines specified in the Manual on Uniform Traffic Control Devices for Streets and Highways (MUTCD) (latest edition) and the FDOT Standard Index. The Contractor shall post all needed warning signs for construction and shall furnish the necessary flagmen and other traffic safety devices as needed.
3. All testing shall be provided by the Contractor in accordance with FDOT Standard Specifications.
4. The Contractor shall be responsible for locating and protecting any existing utilities or private improvements. When necessary, the Contractor shall be responsible for coordinating any and all necessary adjustments by others.

S. CONTRACT ADMINISTRATION AND PROJECT CLOSEOUT

1. Contractor shall submit a Schedule of Values for review and approval by the County prior to beginning construction. The County will approve a Schedule of Values that it determines is balanced and consistent with the Bid.
2. Payments to Contractor shall be based upon work completed and materials stored and shall be consistent with Bid Amounts and the submitted Schedule of Values.

3. Quantities of materials indicated on the Bid Forms are approximate only and may be adjusted by the County based on field conditions or other information.
4. The County shall require 10% retainage for all Pay Draw Requests, which shall be paid in full to Contractor upon the County's acceptance of the completed Work. Pay Draw Requests shall be submitted to the County.
5. Contractor shall submit a number of shop drawings sets such that the County can retain two (2) record sets and the manufacturer and Contractor shall have a sufficient number of shop drawing sets for their purposes.
6. County acceptance of the Project shall follow a final inspection with the Contractor and the County Representative with official acceptance indicated only by written correspondence from the County.
7. The County may enter into separate contracts with the Contractor awarded this Bid at any time within the first 12 months following construction commencement, with said separate contract(s) based on the same Bid Item Unit Prices specified in the Bid, provided that both parties agree.

T. MEASUREMENT AND PAYMENT

Measurement of and payment for bid items shall be in accordance with FDOT Specifications unless otherwise noted in the Bid Documents, or, as noted in this section of the Bid Manual. Bid Items in **blue** font are possible alternates and Bid Items in **red** font are possible deductions.

Bid Item	FDOT Pay Item	Measurement and Payment
1	101	Mobilization
		<u>Measurement:</u> Percent of Contract Time elapsed.
		<u>Payment:</u> Incremental payments, not totaling more than the lump sum bid amount, shall be made based on the percent of Contract Time elapsed.
2	102	Maintenance of Traffic
		<u>Measurement:</u> Percent of Contract Time elapsed.
		<u>Payment:</u> Incremental payments, not totaling more than the lump sum bid amount, shall be made based on the percent of Contract Time elapsed.
3	104	Erosion and Sediment Control:
		<u>Measurement:</u> Percent of Contract Time elapsed.
		<u>Payment:</u> Incremental payments, not totaling more than the lump sum bid amount, shall be made based on the percent of Contract Time elapsed. No payment for Bid Item if deducted from bid.
4	110	Demolition
		<u>Measurement:</u> No measurement for a Bid Item. Work for each Bid Item to be completed in full.
		<u>Payment:</u> Payments in lump sum for each Sub-Item Cost amount shall be made for work completed in full for each Sub-Item. No payment for Bid Item if deducted from bid.
5	120	Earthwork - Regular Excavation
		<u>Measurement:</u> Cubic yards completed and accepted per FDOT Specification 120-13.
		<u>Payment:</u> Per FDOT Specification 120.14.

Bid Item	FDOT Pay Item	Measurement and Payment
5	120	Earthwork – Embankment
		<u>Measurement:</u> Cubic yards completed and accepted per FDOT Specification 120-13.
		<u>Payment:</u> Per FDOT Specification 120.14.
5	120	Earthwork – Excavation
		<u>Measurement:</u> Cubic yards of excavated material completed and accepted measured in-place .
		<u>Payment:</u> Per FDOT Specification 120.14.
5	160	Earthwork - Type B Stabilization
		<u>Measurement:</u> Square yards completed and accepted per FDOT Specification 160-5.
		<u>Payment:</u> Per FDOT Specification 160-6.
6	160	Shoulder Rework
		<u>Measurement:</u> Percent of work completed.
		<u>Payment:</u> Incremental payments, not totaling more than the lump sum bid amount, shall be made based on length of roadway work completed.
7	285	Base Material
		<u>Measurement:</u> Square yards furnished, completed and accepted per FDOT Specification 285-8.
		<u>Payment:</u> Per FDOT Specification 285-9, with the exception that no pay adjustment will be made for superpave asphalt base course.
8	327	Milling of Existing Asphalt Pavement
		<u>Measurement:</u> Square yards completed and accepted per FDOT Specification 327-5. Includes delivery of millings to County stockpile on Arnold Rhoden Road.
		<u>Payment:</u> Per FDOT Specification 327-6. Payment in full upon County acceptance of millings delivered to County stockpile on Arnold Rhoden Road. No payment for Bid Item if deducted from bid.
9	332	Full-Depth Reclamation
		<u>Measurement:</u> Square yards completed and accepted per FDOT Specification 332-8.
		<u>Payment:</u> Per FDOT Specification 332-8.

Bid Item	FDOT Pay Item	<u>Measurement and Payment</u>
10	334	Superpave Asphalt Concrete (SP12.5 PG76-22)
		<u>Measurement:</u> Weight of the mixture in tons furnished, installed, completed and accepted per FDOT Specifications 334-7.
		<u>Payment:</u> Per FDOT Specification 334-8. No payment for Bid Item if deducted from bid.
11	400	Concrete Barrier Wall with Junction Slab
		<u>Measurement:</u> No measurement for a Bid Item.
		<u>Payment:</u> Lump sum payment for work completed and accepted in full.
12	430	Storm Drainage - Pipe
		<u>Measurement:</u> The plan quantity of pipe by type and dimensions furnished, installed completed and accepted per FDOT Specifications 430-11.
		<u>Payment:</u> Per FDOT Specification 430-12. No payment for Bid Item if deducted from bid.
13	430	Storm Drainage – End Treatments
		<u>Measurement:</u> The number of end sections furnished, installed, completed and accepted per FDOT Specifications 430-11.
		<u>Payment:</u> Per FDOT Specification 430-12. No payment for Bid Item if deducted from bid.
14	536	Guardrail
		<u>Measurement:</u> The plan quantity, in feet, furnished, installed, completed and accepted per FDOT Specifications 536-5.
		<u>Payment:</u> Per FDOT Specification 536-6.
15	546	Rumble Strips
		<u>Measurement:</u> No measurement. The completed plan quantity constructed and accepted.
		<u>Payment:</u> Lump sum payment for all work completed and accepted.

Bid Item	FDOT Pay Item	Measurement and Payment
16	570	Performance Turf
		<u>Measurement:</u> Square yards for each turf type (sod and seed) furnished, installed, established and accepted per FDOT Specification, Section 570-8.
		<u>Payment:</u> Per FDOT Specification 570-9.
17	700	Traffic Signage
		<u>Measurement:</u> The number of single post signs furnished, installed, completed and accepted per FDOT Specification 700-9.
		<u>Payment:</u> Per FDOT Specification 700-10.
18	705	Object Markers
		<u>Measurement:</u> The number of object markers furnished, installed, completed and accepted per FDOT Specification 705-4.
		<u>Payment:</u> Per FDOT Specification 705-5. No payment for Bid Item if deducted from bid.
19	706	Raised Pavement Markers
		<u>Measurement:</u> The number of raised pavement markers furnished, installed, completed and accepted per FDOT Specification 706-6.
		<u>Payment:</u> Per FDOT Specification 706-7.
20	710 & 711	Traffic Markings
		<u>Measurement:</u> Length of markings installed, completed and accepted per FDOT Specifications 710-10 and 711-9.
		<u>Payment:</u> Per FDOT Specifications 710-11 and 711-10.
21		Construction Bond
		<u>Measurement:</u> No measurement. Bonds to include both Performance and Payment Bonds.
		<u>Payment:</u> Payment shall not exceed 2.5% of the contracted bond amounts.

Bid Item	FDOT Pay Item	Measurement and Payment
A1	334	Surface Leveling Course (SP9.5 at 75 lbs/sy)
		<u>Measurement:</u> Weight of the mixture in tons furnished, installed, completed and accepted per FDOT Specifications 334-7.
		<u>Payment:</u> Per FDOT Specification 334-8. No payment if not included in bid.
A2	334	Superpave Asphalt Concrete (SP9.5 PG76-22)
		<u>Measurement:</u> Weight of the mixture in tons furnished, installed, completed and accepted per FDOT Specifications 334-7.
		<u>Payment:</u> Per FDOT Specification 334-8. No payment if not included in bid.

APPENDIX A

County Road 229 - Widening and Resurfacing Project
Baker County Project No. 2025-16

BID FORMS

BID CHECKLIST

County Road 229 - Widening and Resurfacing Project
Baker County Project No. 2025-16

Submitted By: _____

Bidder/Entity: _____

The Bidder is to provide one (1) original and three (3) copies of the following documents to satisfy bid submittal requirements. Include this Checklist in the submittal.

Document	Form Provided in Bid Manual	Check Below for Items Included
Bid (Bid Form & completed Bid Tabulations)	Yes	<input type="checkbox"/>
Subcontractor Listing	Yes	<input type="checkbox"/>
Sworn Statement on Public Entity Crimes	Yes	<input type="checkbox"/>
E-Verify Form	Yes	<input type="checkbox"/>
Conflict of Interest Statement	Yes	<input type="checkbox"/>
Drug Free Workplace Certificate	Yes	<input type="checkbox"/>
Non-Collusion Affidavit	Yes	<input type="checkbox"/>
Bid Bond	Yes	<input type="checkbox"/>
Bid Surety	By Bidder	<input type="checkbox"/>
Copies of Business & Professional Licenses	By Bidder	<input type="checkbox"/>
Proof of Insurance	By Bidder	<input type="checkbox"/>
Any other documents in accordance with specifications	By Bidder	<input type="checkbox"/>

BID FORM

County Road 229 - Widening and Resurfacing Project
Baker County Project No. 2025-16

Submitted By: _____

Bidder/Entity: _____
Principal Bidder: _____
Company Address: _____

Bid Submittal Date: _____

Base Bid

Total Base Bid Amount
(Numeric): _____

Total Base Bid Amount in
(Words): _____

Alternate Bid

Total Alternate Bid Amount
(Numeric): _____

Total Alternate Bid Amount
in (Words): _____

TO BAKER COUNTY:

We, the undersigned, hereby declare that:

1. no person or persons, firm or corporation, other than the undersigned, are interested, in this Bid, as Principals;
2. this Bid is made without collusion with any other person, firm, or corporation;
3. we have carefully, and to our full satisfaction, examined the General Provisions and Contract and Bond, together with Bid Plans, Specifications and Notes;

BID FORM

County Road 229 - Widening and Resurfacing Project
Baker County Project No. 2025-16

Submitted By:

Bidder/Entity: _____

We, the undersigned, hereby declare that:

4. we have made a full examination of the location of the proposed work and the sources of supply of materials and fully understanding that actual construction quantities may vary; and
5. we will fully complete all necessary work in accordance with the Bid Plans and Specifications provided in the Bid Documents, within the time limits specified in this Bid, for the unit prices and total amounts specified on our submitted Bid.

Contract Time

All construction work shall be completed within 280 calendar days; with the Contract Time beginning 15 calendar days after the Contract is awarded to the successful Bidder by written notification from the County.

List of Subcontractors

A list of qualified subcontractors is provided on the Bid List of Subcontractors form.

Bid Tabulation Form(s)

We have completed the Bid Tabulation Form(s) that begins on the following page and agree that:

- 1) the Bid Items collectively cover all work contemplated by the Bid Plans; and
- 2) measurement and payment specifications are clear, unambiguous, balanced and appropriate for this Project.

Bid Tabulation Form

County Road 229 Widening and Resurfacing Project

Baker County Project No: 2025-16

Bidder: _____
(Company Name)

Date: _____

Bid Item	FDOT Pay Item Group	Item Description	Qty.	Units	Item Unit Cost	Sub-Item Cost	Total Item Cost
1	101	Mobilization	1	LS	\$	\$	\$
2	102	Maintenance of Traffic	1	LS	\$	\$	\$
3	104	Erosion and Sediment Control	1	LS	\$	\$	\$
4	110	Demolition					\$
		Removal of Cross Drain Headwalls	34	CY	\$	\$	
		Removal of Existing Guardrail	182	LF	\$	\$	
		Removal of Sidedrains	138	LF	\$	\$	
		Relocate Single Post Sign	8	EA	\$	\$	
		Remove Object Markers	17	EA	\$	\$	
		Relocate Mailbox	11	EA	\$	\$	
		Remove Mailbox	2	EA	\$	\$	
5	120 & 160	Earthwork					\$
		Excavation - Regular	3,689	CY	\$	\$	
		Embankment/Fill	1,410	CY	\$	\$	
		Type B Stabilization	705	SY	\$	\$	
6	120	Shoulder Rework	5,514	CY	\$	\$	\$
7	285	Base Material					\$
		Widening (OBG6)	7,008	SY	\$	\$	
		Paved Shoulders (OBG6)	4,672	SY	\$	\$	
		Base Extension (OBG6)	1,556	SY	\$	\$	
		Base Material for FDR (6")	10,524	CY	\$	\$	
		Miscellaneous Asphalt (OBG 1)	50	SY	\$	\$	
		Base Material for Side Roads (OBG6)	705	SY	\$	\$	
		Base Material for Driveway Turnouts (OBG2)	396	SY	\$	\$	
8	327	Milling Existing Asphalt					\$
		1" Milling Depth	31,546	SY	\$	\$	
		Delivery of Salvage Material to County	1	LS	\$	\$	
9	332	Full-Depth Reclamation					\$
		FDR 6"Limerock Overlay	10,524	SY	\$	\$	
10	334	Asphaltic Pavement					\$
		Asphaltic Pavement (SP12.5 PG76-22)	6,578	TON	\$	\$	

Bid Tabulation Form

County Road 229 Widening and Resurfacing Project

Baker County Project No: 2025-16

Bidder: _____
(Company Name)

Date: _____

Bid Item	FDOT Pay Item Group	Item Description	Qty.	Units	Item Unit Cost	Sub-Item Cost	Total Item Cost
11	400	Concrete Barrier Wall with Junction Slab					\$
		Barrier With Jct. Slab, 36" Single Slope	85	CY	\$	\$	
		Grade 60 Reinforcing Steel	5,040	LB	\$	\$	
12	430	Storm - Pipe Culverts					\$
		18" Round	182	LF	\$	\$	
		24" Round	81	LF	\$	\$	
		30" Round	21	LF	\$	\$	
		36" Round	88	LF	\$	\$	
13	430	Storm - End Treatments					\$
		Conc. Collar 24" (430.001)	8	EA	\$	\$	
		Conc. Collar 30" (430.001)	6	EA	\$	\$	
		Conc. Collar 36" (430.001)	8	EA	\$	\$	
		FDOT MES (430-022) SGL. 18" (4:1)	2	EA	\$	\$	
		FDOT MES (430-021) SGL. 24" (4:1)	2	LF	\$	\$	
		FDOT MES (430-021) DBL. 24" (4:1)	2	LF	\$	\$	
		FDOT MES (430-021) SGL. 30" (4:1)	2	LF	\$	\$	
		FDOT MES (430-021) QUAD 36" (4:1)	2	LF	\$	\$	
		FDOT HEADWALL (430-030) DBL. 24"	2	LF	\$	\$	
14	536	Guardrail					\$
		Guardrail - TL-3 (Std. W-Beam)	454	LF	\$	\$	
		Guardrail - TL-3 (Nested W-Beam)	50	EA	\$	\$	
		Guardrail - TL-3 (Nested Thrie-Beam)	50	LF	\$	\$	
		Transition Panel (Thrie to W)	4	LF	\$	\$	
		TL-3 Approach Transition, Conn. To Rigid	4	LF	\$	\$	
		End Treatment - TL-3 Approach Terminal	4	EA	\$	\$	
15	546	Rumble Strips					\$
		Ground-In 8" Edgeline	1,045	LF	\$	\$	
16	570	Performance Turf					\$
		Performance Turf (Seed)	11,447	SY	\$	\$	
		Performance Turf (Sod)	16,586	SY	\$	\$	

Bid Tabulation Form County Road 229 Widening and Resurfacing Project Baker County Project No: 2025-16							
Bidder: _____ (Company Name)				Date: _____			
Bid Item	FDOT Pay Item Group	Item Description	Qty.	Units	Item Unit Cost	Sub-Item Cost	Total Item Cost
17	700	Traffic Signage					\$
		F&I Single Post Sign < 12SF	12	EA	\$	\$	
		Relocate Single Post Sign < 12SF	8	EA	\$	\$	
18	705	Object Markers					\$
		Object Markers, Type 2	14	EA	\$	\$	
19	706	Raised Pavement Markers					\$
		Raised Pavement Markers	971	EA	\$	\$	
20	710 & 711	Traffic Markings					\$
		White Solid 6" Paint	84,306	LF	\$	\$	
		White Solid 24" Paint	154	LF	\$	\$	
		Yellow 6" Skip (10'/30') Paint	27,150	LF	\$	\$	
		Yellow 6" Solid Paint	50,820	LF	\$	\$	
21	000	Construction Bond	1	LS	\$	\$	\$
BASE BID AMOUNT =							\$

Following are possible Bid Item Alternates and Bid Item Deductions. Bidder understands that bid item alternates and deductions may be used to determine a Alternate Bid Amount (ABA) as outlined on the following page of this Bid Tabulation Form and as described in the Bid Manual.

Bid Item Alternates

Surface Leveling: Baker County may elect Alternate Bid Item A1 (a surface leveling course at a rate of \$75 lbs/sy) to replace Base Bid Item No. 8 (1" of milling and delivery of salvage material).

Alt. Bid Item	FDOT Pay Item Group	Item Description	Qty.	Units	Item Unit Cost	Sub-Item Cost	Total Item Cost
A1	334	Surface Leveling Course (SP9.5 at 75lbs/sy)	1,182	TON	\$	\$	\$

Pavement Type: Baker County may elect Alternate Bid Item A2 (SP9.5) to replace Bid Item No. 10 (SP12.5).

Alt. Bid Item	FDOT Pay Item Group	Item Description	Qty.	Units	Item Unit Cost	Sub-Item Cost	Total Item Cost
A2	334	Asphaltic Pavement (SP9.5 PG76-22)	6,578	TON	\$	\$	\$

Bid Item Deductions

Baker County reserves the right to deduct any and all Bid Item Deductions listed on this Bid Tabulation Form. Bid Items that may be deducted from the bid include Bid Items 3, 4, 12, 13 and 18. These Bid Items are represented in **red bold** font.

<h2 style="margin: 0;">Bid Tabulation Form</h2> <p style="margin: 0;">County Road 229 Widening and Resurfacing Project</p> <p style="margin: 0;">Baker County Project No: 2025-16</p>							
Bidder: _____ <div style="text-align: center; font-size: small;">(Company Name)</div>						Date: _____	
Bid Item	FDOT Pay Item Group	Item Description	Qty.	Units	Item Unit Cost	Sub-Item Cost	Total Item Cost

Procedure to Determine the Low Bidder

The following calculation steps will be followed to determine a Low Bid that does not exceed the project budget.

Step No. Description

Bid Amount ID	Calculated Bid Amount
---------------	-----------------------

1. The bid with the lowest Base Bid Amount (BBA), where the BBA is less than or equal to the project budget, will be considered the Low Bid.

BBA =	\$
-------	----

2. If no BBA is less than or equal to the project budget, then an Alternate 1 Bid Amount (A1BA) will be calculated for each bid. The lowest A1BA, that is less than or equal to the project budget, will be considered the Low Bid.

A1BA =	\$
--------	----

3. If no A1BA is less than or equal to the project budget, then an Alternate 2 Bid Amount (A2BA) will be calculated for each bid. Note that A2BA will include both A1 and A2 alternates unless A1BA is greater than BBA, in which case A2BA will only include A2. The lowest A2BA, that is less than or equal to the project budget, will be considered the Low Bid.

A2BA =	\$
--------	----

4. If no A2BA is less than or equal to the project budget, then A2BA will become the basis for Bid Item Deductions. Bid Deductions will be subtracted from A2BA, in a cumulative manner, according to the following sequence.

D1 Deduct Bid Item No. 3 "Erosion and Sediment Control" from the A2BA to calculate the bid amount D1BA.

D1BA =	\$
--------	----

D2 Deduct Bid Item No. 12 "Storm - Pipe Culverts" and Bid Item No. 13 "Storm - End Treatments" from D1BA to calculate D2BA.

D2BA =	\$
--------	----

D3 Deduct Bid Item No. 4 "Demolition" from the ABA to calculate an EBA.

D3BA =	\$
--------	----

D4 Deduct Bid Item No. 18 "Object Markers" from the ABA to calculate an EBA.

D4BA =	\$
--------	----

Deduction 1 Bid Amount (D1BA) includes the A2BA basis and deduction D1. Deduction 2 Bid Amount (D2BA) includes D1BA and deduction D2. This process (D1, D2, D3 and then D4) continues until at least one bid is less than or equal to the project budget. The lowest D# bid, with an amount less than or equal to the project budget, will be considered the Low Bid.

5. Bidder agrees that, if they become the Low Bid for the A1BA or the A2BA condition, and their bid is less than the project budget, that they will accept the bid award and enter into contract negotiations with the County.
6. Bidder and the County agree that, if a bidder becomes the Low Bid for any of the D# conditions, and their bid amount is less than or equal to the project budget, the Bidder is not obligated to accept a bid award and will not forfeit their Bid Security. In this case, the County may elect to award the bid to the next lowest bid, provided this bid is less than or equal to the project budget.
7. Baker County reserves the right to reject any and all bids that it determines is not in the best interest of the County.

BID FORM

County Road 229 - Widening and Resurfacing Project
Baker County Project No. 2025-16

Submitted By:

Bidder/Entity: _____

The undersigned agrees to perform all necessary work, as provided for in the General Provisions, to execute the Contract, to furnish proof of Bond before beginning work, and to fully complete all necessary work within 280 calendar days. It is understood and agreed that the Contract Time shall begin 15 calendar days after the contract is awarded. The undersigned further agrees to furnish a sufficient and satisfactory Contract Bond in the sum not less than 100 percent of the Contract Amount.

The undersigned further agree(s) to bear the full cost of maintaining all work until final acceptance by the County, as provided in the General Provisions.

I, (We), the undersigned, hereby certify that I (we) have carefully examined the Bid Documents and have verified each item placed thereon; and I (we) agree to indemnify, defend and save harmless, the County against any cost, damage, or expense which it may incur due to any error in the preparation this Bid.

Bidder/Entity: _____ **Type:** _____

Principal Bidder: _____ (signature) _____
_____ (written) _____ date

Witness 1: _____ (signature) _____
_____ (written) _____ date

Witness 2: _____ (signature) _____
_____ (written) _____ date

1. If corporation, affix corporate seal where provided.
2. If corporation, Principal Bidder shall be President or Vice President. Attested By shall be other Corporate Officer.
3. If Partnership, Bidder shall be Managing Partner. Attested By shall be Co-Partner or General Partner.
4. If Partnership, provide a list of names and addresses of all partners.
5. If Joint Venture, provide a list of names and addresses of all Joint Venture companies, names and addresses.
6. If Individual/Sole Proprietor, Bidder shall be individual/ owner.

Corporate Seal of Bidder

LIST OF SUBCONTRACTORS

County Road 229 - Widening and Resurfacing Project
Baker County Project No. 2025-16

Submitted By:

Bidder/Entity: _____

Construction Discipline	Subcontractor Company	Subcontractor Address

Attach Additional Pages for Subcontractors if Necessary

SWORN STATEMENT ON PUBLIC ENTITY CRIMES
SECTION 287.133(3)(a), FLORIDA STATUTES,
County Road 229 - Widening and Resurfacing Project
Baker County Project No. 2025-16

TO BE RETURNED WITH BID

THIS MUST BE SIGNED IN THE PRESENCE OF A NOTARY PUBLIC OR OTHER OFFICER
AUTHORIZED TO ADMINISTER OATHS

1. This sworn statement is submitted with Bid or Contract for _____.
2. This sworn statement is submitted by _____
(Bidder/Entity submitting this sworn statement), whose business address is _____ and whose Federal Employee Identification Number (FEIN) is _____. (If the Entity has no FEIN, include the Social Security Number of the individual signing this sworn statement).
3. My name is _____ (print name),
and my relationship to the Entity named above is _____.
4. I understand that a "public entity crime" as defined in Paragraph 287.133(1)(g), Florida Statutes, means a violation of any state or federal law by a person with respect to and directly related to the transaction of business with any public entity or with an agency or political subdivision of any other state or with the United States, including, but not limited to, any bid or contract for goods or services, any leases for real property, or any contract for the construction or repair of a public building or public work, to be provided to any public entity or an agency or political subdivision of any other state or of the United States and involving antitrust, fraud, theft, bribery, collusion, racketeering, conspiracy, or material misrepresentation.
5. I understand that "convicted" or "conviction" as defined in paragraph 287.133(1)(b), Florida Statutes, means a finding of guilt or a conviction or a public entity crime, with or without an adjudication of guilt, in any federal or state trial court of record relating to charges brought by indictment or information after July 1, 1989, as a result of a jury verdict, non-jury trial, or entry of a plea of guilty or nolo contendere.
6. I understand that an "affiliate" as defined in paragraph 287.133(1)(a), Florida Statutes, means:

SWORN STATEMENT ON PUBLIC ENTITY CRIMES
SECTION 287.133(3)(a), FLORIDA STATUTES,

County Road 229 - Widening and Resurfacing Project
Baker County Project No. 2025-16

- a) A predecessor or successor of a person convicted of a public entity crime; or
- b) An entity under the control of any natural person who is active in the management of the entity and who has been convicted of a public entity crime. The term "affiliate" includes those officers, directors, executives, partners, shareholders, employees, members, and agents who are active in the management of an affiliate. The ownership by one person of shares constituting a controlling interest in another person, or a pooling of equipment or income among persons when not to fair market value under an arm's length agreement, shall be prima facie case that one person controls another person. A person who knowingly enters into a joint venture with a person who has been convicted of a public entity crime in Florida during the preceding thirty-six (36) months shall be considered an affiliate.

7. I understand that a "person" as defined in Paragraph 287.133(1)(e), Florida Statutes, means any natural person or entity organized under the laws of any state or of the United States with the legal power to enter into binding contract and which bids or applies to bid on contracts let by a public entity, or which otherwise transacts or applies to transact business with a public entity. The term "person" includes those officers, directors, executives, partners, shareholders, employees, members, and agents who are active in management of an entity.

8. Based on information and belief, the statement, which I have marked below, is true in relation to the Entity submitting this sworn statement. (Please indicate which statement applies.)

_____ Neither the Entity submitting this sworn statement, nor any of its officers, directors, executives, partners, shareholders, employees, members, or agents who are active in management of the Entity, nor any affiliate of the Entity have been charged with and convicted of a public entity crime subsequent to July 1, 1989.

_____ The Entity submitting this sworn statement, or one of more of the officers, directors, executives, partners, shareholders, employees, members, or agents who are active in management of the Entity, or an affiliate of the Entity has been charged with and convicted of a public entity crime subsequent to July 1, 1989, and (Please indicate which additional statement applies.)

SWORN STATEMENT ON PUBLIC ENTITY CRIMES
SECTION 287.133(3)(a), FLORIDA STATUTES,

County Road 229 - Widening and Resurfacing Project
Baker County Project No. 2025-16

_____ There has been a proceeding concerning the conviction before a hearing officer of the State of Florida, Division of Administrative Hearings. The final order entered by the Hearing Officer did not place the person or affiliate on the convicted bidder list. (Please attach a copy of the final order.)

_____ The person or affiliate was placed on the convicted bidder list. There has been a subsequent proceeding before a hearing officer of the State of _____ Florida, Division of Administrative Hearings. The final order entered by the hearing officer determined that it was in the public interest to remove the person or affiliate from the convicted bidder list. (Please attach a copy of the final order.)

_____ The person or affiliate has not been placed on the convicted bidder list. (Please describe any action taken by or pending with the Department of General Services.)

Signature

Written Name

Date

STATE OF FLORIDA
COUNTY OF _____

Sworn to (or affirmed) and subscribed before me this _____ day of
_____, 20_____.

(Notary Seal)

Personally Known _____ Or produced identification _____.

Type of Identification Produced: _____

E-VERIFY FORM

County Road 229 - Widening and Resurfacing Project
Baker County Project No. 2025-16

Bidder/Entity:

The Company acknowledges and agrees to utilize the U.S. Department of Homeland Security's E-verify system in accordance with the terms governing use of the system for the purpose of confirming the employment eligibility of all employees, subcontractors or persons utilized by the Company while undertaking work within Baker County.

Company Representative:

Signature

Written Name

Title

Date

CONFLICT OF INTEREST STATEMENT

County Road 229 - Widening and Resurfacing Project
Baker County Project No. 2025-16

I _____ hereby depose and state that:
(Affiant's written name)

I am the _____ of _____,
(title) (Entity)

with a local office in _____
County & State

and a principal office _____;
County & State

and further depose and state that:

1. The above named Entity is submitting a Bid for the Baker County Board of County Commissioners for Baker County Project Number **2025-16**.
2. I have made diligent inquiry and provide the information contained in this Affidavit based upon my own knowledge.
3. Only one submittal for the above proposal is being submitted and that the above named Entity has no financial interest in other entities submitting proposals for the same project.
4. Neither I, nor the above named Entity, has directly or indirectly entered into any agreement, participated in any collusion, or otherwise taken any action in restraints of free competitive pricing in connection with the Entity's submittal for the above-referenced Baker County project. This statement restricts the discussion of pricing data until the completion of negotiations and execution of the Contract for this Project.
5. Neither the Entity nor its affiliates, nor anyone associated with them, is presently suspended or otherwise ineligible from participation in contract letting by any local, State, or Federal Agency.
6. Neither the Entity nor its affiliates, nor anyone associated with them have any potential conflict of interest due to any other clients, contracts, or property interests for this Project.

CONFLICT OF INTEREST STATEMENT

County Road 229 - Widening and Resurfacing Project
Baker County Project No. 2025-16

7. I certify that no member of the Entity's ownership or management is presently applying for an employee position or actively seeking an elected position with the Baker County Board of County Commissioners.
8. I certify that no member of the Entity's ownership, management or staff has a vested interest in any aspect of the Baker County Board of County Commissioners.
9. In the event that a conflict of interest is identified in the provision of services, I, on behalf of the above named Entity, will immediately notify the Baker County Board of County Commissioners.

DATED: this _____ day of _____, 20_____.

Affiant's Signature

Affiant's Written Name and Title

STATE OF FLORIDA
COUNTY OF _____

Sworn to (or affirmed) and subscribed before me this _____ day of _____, 20_____.

(Notary Seal)

Personally Known _____ Or produced identification _____.

Type of Identification Produced: _____

DRUG-FREE WORKPLACE CERTIFICATE

County Road 229 - Widening and Resurfacing Project
Baker County Project No. 2025-16

I, the undersigned, in accordance with Florida Statute 287.087, hereby certify that,

(print or type name of company)

publishes a written statement notifying that the unlawful manufacture, distribution, dispensing, possession or use of a controlled substance is prohibited in the workplace named above, and that specifies actions that will be taken against violations of such prohibitions.

Further, that the published written statement includes the following.

1. Informs employees about the dangers of drug abuse in the work place; the firm's policy of maintaining a drug-free working environment; available drug counseling, rehabilitation, and employee assistance programs; and the penalties that may be imposed upon employees for drug use violations.
2. Gives each employee engaged in providing commodities or contractual services that are under bid or proposal, a copy of the statement specified above.
3. Notifies the employees that as a condition of working on the commodities or contractual services that are under bid or proposal, the employee will abide by the terms of the statement and will notify the employer of any conviction of, plea of guilty or nolo contender to, any violation of Chapter 1893, of any controlled substance law of the State of Florida or the United States, for a violation occurring in the work place, no later than five (5) days after such conviction, and requires employees to sign copies of such written (*) statement to acknowledge their receipt.
4. Imposes a sanction on, or requires the satisfactory participation in, a drug abuse assistance or rehabilitation program, if such is available in the employee's community, by any employee who is so convicted.
5. Makes a good faith effort to continue to maintain a drug-free work place through the implementation of the drug-free workplace program.

DRUG-FREE WORKPLACE CERTIFICATE

County Road 229 - Widening and Resurfacing Project
Baker County Project No. 2025-16

“As a person authorized to sign this statement, I certify that the above named business, firm or corporation complies fully with the requirements set forth herein”

DATED: this _____ day of _____ 20_____.

Print or Type Company Name

Affiant's Signature

Affiant's Written Name and Title

STATE OF FLORIDA
COUNTY OF _____

Sworn to (or affirmed) and subscribed before me this _____ day of _____, 20_____.

(Notary Seal)

Personally Known _____ Or produced identification _____.

Type of Identification Produced: _____

NON-COLLUSION AFFIDAVIT

County Road 229 - Widening and Resurfacing Project
Baker County Project No. 2025-16

I _____ hereby depose and state that:
(Affiant's written name)

I am the _____ of _____,
(title) (Entity)

with a local office in _____
County & State

and a principal office _____;
County & State

and further depose and state that:

1. The Entity listed above has submitted the attached Bid.
2. I and the Entity are fully informed respecting the preparation and contents of the attached Bid and of all pertinent circumstances respecting such Bid;
3. The submitted Bid is genuine and is not a collusive or a sham Bid;
4. Neither I, nor any of the Entity's officers, partners, owners, agents, representatives, employees, or parties in interest, has in any way colluded, connived, or agreed, directly or indirectly, with any other Bidder, firm or person to submit a collusive or sham Bid in connection with such Contract, or has in any manner, directly or indirectly, sought by agreement or collusion or communication or conference with any other Bidder, firm, or person to fix the price or prices in the attached Bid or any other Bidder, or to fix any overhead, profit or cost element of the bid price or the bid price of any other Bidder, or to secure through any collusion, connivance, or unlawful agreement any advantage against the Baker County Board of County Commissioners, Florida or any person interested in the proposed Contract; and
5. The price or prices quoted in the attached Bid are fair and proper and are not tainted by any collusion, conspiracy, connivance, or unlawful agreement on the part of the Bidder or any of its agents, representatives, owners, employees, or parties in interest, including this affiant.

NON-COLLUSION AFFIDAVIT

County Road 229 - Widening and Resurfacing Project
Baker County Project No. 2025-16

Print or Type Company Name

Affiant's Signature

Affiant's Written Name and Title

STATE OF FLORIDA

COUNTY OF _____

Sworn to (or affirmed) and subscribed before me this _____ day of
_____, 20_____.

(Notary Seal)

Personally Known_____ Or produced identification_____.

Type of Identification Produced:_____

BID BOND

County Road 229 - Widening and Resurfacing Project
Baker County Project No. 2025-16

**A Bid Surety in the amount specified below
shall be attached to this Bid Bond form as part of the Bid submittal**

KNOW ALL MEN BY THESE PRESENTS, That we, _____, as Bidder, and _____ as Surety, are held firmly bound unto the Board of County Commissioners, Baker County, Florida (hereinafter called the Board) in full and just sum of FIVE PERCENT (5%) of the actual Bid Amount of _____ dollars, in lawful money of the United States of America to be paid to the Board, to which payment well and truly to be made we bind ourselves, our heirs, executors, administrators, successors and assigns, jointly and severally and firmly by these presents:

WHEREAS, the said Principal is herewith submitting a Bid to the Board for constructing or otherwise improving miscellaneous public works repair projects in Baker County, particularly known as Baker County Project Number **2025-16**;

NOW, THEREFORE, the condition of this obligation is such that if the said Principal shall execute a Contract and give a Contract Bond for the faithful performance thereof within ten (10) days after being notified in writing of the award of such Contract to Principal, or if the Surety shall pay the Board the full amount of this bond, then this obligation shall be void; otherwise it shall remain in full force and effect.

SIGNED, SEALED AND DATED THIS _____ day of _____, 20_____

Bidder/Entity: _____ **Type:** _____

Principal Bidder: _____ (signature) _____
_____ (written) _____ date

Witness 1: _____ (signature) _____
_____ (written) _____ date

1. If corporation, affix corporate seal where provided.
2. If corporation, Principal Bidder shall be President or Vice President. Attested By shall be other Corporate Officer.
3. If Partnership, Bidder shall be Managing Partner. Attested By shall be Co-Partner or General Partner.
4. If Partnership, provide a list of names and addresses of all partners.
5. If Joint Venture, provide a list of names and addresses of all Joint Venture companies, names and addresses.
6. If Individual/Sole Proprietor, Bidder shall be individual/ owner.

Corporate Seal of Bidder

BID BOND

County Road 229 - Widening and Resurfacing Project
Baker County Project No. 2025-16

Name of Surety: _____

By: _____ (Signature)
Agent or Attorney-In-Fact

_____ (Written)

Countersigned: _____ (Signature)
Florida Resident Agent

_____ (Written)

Witness 1: _____ (Signature)

_____ (Written)

NOTE: Surety must be company acceptable as Surety on Federal Bonds. Power of Attorney showing authority of Surety's Agent or Attorney-In-Fact shall be furnished. Affix Corporate Seals of Bidder (If a corporation) and Surety. Secretary or Assistant Secretary must attest signature of corporate officer.

Corporate Seal of Surety

STATE OF FLORIDA
COUNTY OF _____

Sworn to (or affirmed) and subscribed before me this _____ day of _____, 20_____.

(Notary Seal)

Personally Known _____ Or produced identification _____.

Type of Identification Produced: _____

REPLACE THIS PAGE
WITH
BID SURETY

END OF BID FORMS

County Road 229 - Widening and Resurfacing Project
Baker County Project No. 2025-16

APPENDIX B

County Road 229 - Widening and Resurfacing Project
Baker County Project No. 2025-16

GEOTECHNICAL ENGINEERING INVESTIGATION

JACKSON GEOTECHNICAL ENGINEERING, LLC

Consulting Geotechnical Engineers

**DRAFT REPORT OF GEOTECHNICAL EXPLORATION
CR 229 CULVERT EXTENSION
BAKER COUNTY, FLORIDA
JGE PROJECT NO. 22-248.1**

Prepared for:

Tarbox Consulting and Design
3716 Rubin Road
Jacksonville, Florida 32257

Prepared by:

Jackson Geotechnical Engineering
164 Plaza Del Rio Drive
St. Augustine, Florida 32084
Phone: 904-252-2292

May 30, 2022

JACKSON GEOTECHNICAL ENGINEERING, LLC

Consulting Geotechnical Engineers

May 30, 2022

Mr. Troy Tarbox, P.E., CFM
Tarbox Consulting and Design
3716 Rubin Road
Jacksonville, Florida 32257

Report of Geotechnical Exploration and Engineering Services
CR 229 Culvert Extension
Baker County, Florida
JGE Project No. 22-248.1

Dear Mr. Tarbox:

As requested, Jackson Geotechnical Engineering has completed a geotechnical exploration for the subject project. The exploration was performed to evaluate the general subsurface conditions within the area of the proposed culvert extensions, and to provide guidelines to facilitate culvert extension design, foundation soils support and earthwork preparation. We also explored the subsurface conditions at two areas of CR 229 in order to obtain preliminary subsurface conditions for future roadway improvements.

We appreciate this opportunity to be of service as your geotechnical consultant on this phase of the project. Please contact us if you have any questions, or if we may be of any further service.

Sincerely:
Jackson Geotechnical Engineering, LLC.

Jeff S. Jackson, P.E.
Licensed, Florida 51979

Table of Contents

1.0	PROJECT INFORMATION	1
1.1	SITE LOCATION AND DESCRIPTION	1
1.2	PROJECT DESCRIPTION.....	1
2.0	FIELD EXPLORATION.....	1
3.0	LABORATORY TESTING	2
4.0	GENERAL SUBSURFACE CONDITIONS	2
4.1	GENERAL SOIL PROFILE.....	2
4.2	GROUNDWATER LEVEL.....	3
5.0	CULVERT EXTENSION AREA RECOMMENDATIONS	3
5.1	GENERAL	3
5.2	SOIL PARAMETERS	3
5.2.1	SOIL UNIT WEIGHTS	3
5.2.2	ANGLE OF INTERNAL FRICTION	3
5.2.3	COHESION.....	3
5.2.4	LATERAL EARTH PRESSURE COEFFICIENTS	4
5.2.5	MODULUS OF SUBGRADE REACTION	4
5.2.6	NOMINAL AND FACTORED BEARING RESISTANCE	4
5.3	SETTLEMENT ESTIMATES	4
5.4	SITE PREPARATION FOR CULVERT EXTENSIONS	5
6.0	PRELIMINARY PAVEMENT IMPROVEMENT RECOMMENDATIONS	5
7.0	LIMITATIONS	6
APPENDIX A		I
BORING LOCATION PLANS		I
SUBSURFACE PROFILES.....		I
APPENDIX B		II
SOIL PARAMETERS FOR CULVERT EXTENSION DESIGN		II
ESTIMATED SETTLEMENT VS. BEARING PRESSURE.....		II
APPENDIX C		III
PHOTOGRAPHS OF PAVEMENT.....		III

1.0 PROJECT INFORMATION

1.1 Site Location and Description

The subject culvert intersects CR 229, approximately 180 feet south of Earl Harvey Road, in Baker County, Florida. The culvert is comprised of double, pre-cast box sections. Each box section is 5 feet x 7 feet. The culvert was installed to enable surface drainage to naturally flow below County Road 229 at this location.

The natural grade of the topography gently slopes down to the creek area. The channel has experienced some sedimentation/siltation in various areas along the hydraulic flow paths. The subject area typically flows a significant amount of surface water runoff during wet periods of the year.

1.2 Project Description

Project information was provided to us during correspondence with you. Additionally, we were provided with a copy of Exhibit 1 dated February 28, 2022, prepared by Tarbox Consulting and Design, Inc. The provided plan shows an aerial view of the subject segments of CR 229 that are addressed in this report.

Based on the information provided to us, we understand the proposed project will consist of extending the subject existing culvert. The length of the culvert extensions will be approximately 10 feet on both sides. Cross-sectional dimensions of the existing culvert are 5 feet x 7 feet. The proposed extensions will be designed generally according FDOT guidelines. We have assumed any finished pavement elevations will be at least two feet above the top of culvert extensions.

2.0 FIELD EXPLORATION

In order to explore the subsurface conditions within the area of the proposed culvert extensions, 2 Standard Penetration Test (SPT) borings were performed, each to a depth of 30 feet below the existing surface. One boring was performed on each side of the existing culvert locations. Additionally, we performed an auger boring with static cone penetrometer sounding to a depth of 6 feet each at locations adjacent to the eastern and western edges of the culvert, in the flow channel. Within the roadway, we performed 4 auger borings and static cone penetrometer soundings to a depth of 6 feet each. The SPT and auger borings were conducted in accordance with ASTM D 1586, and ASTM D 1452, respectively. The locations of the borings, and the subsurface conditions encountered at each boring location, are presented in Appendix A on the Boring Location Plan and Subsurface Profiles, respectively.

3.0 LABORATORY TESTING

Soil samples recovered during the field exploration were visually classified in accordance with ASTM D 2488. Additional testing consisting of fines content and natural moisture content tests were performed to better define the classification of soils encountered and to provide engineering characteristics of the soils. The results of the testing are presented on the Subsurface Profiles in Appendix A.

4.0 GENERAL SUBSURFACE CONDITIONS

4.1 General Soil Profile

The boring locations and general subsurface conditions that were encountered are presented on the Boring Location Plan and Subsurface Profiles. When reviewing these records, it should be understood the soil conditions may change significantly between the boring locations. The following discussion summarizes the soil conditions encountered.

In general, the SPT borings (B-1 and B-2) encountered loose to dense fine sand (SP), fine sand with silt (SP-SM), and fine sand with clay (SP-SC) throughout the 30-foot explored depths. As an exception, a layer of medium dense clayey fine sand (SC) was encountered at the location of Boring B-1 between the depths of approximately 6 and 13.5 feet, and also between the depths of 18 to 24 feet. In addition, a layer of firm sandy clay (CH) was present at the location of Boring B-2 between the approximate depths of 18 and 23 feet. Five inches of topsoil was present at the location of Boring B-1. Boring B-2 was performed through 4.75 inches of asphalt and 7 inches of base course.

Boring A-1 encountered fine sand with silt (SP-SM) throughout its 6-foot exploration depth. Boring A-2 encountered surficial clayey fine sand (SC) within the upper approximate 2.5 feet underlain by silty fine sand (SM) extending to a depth of 5 feet. Below these strata, fine sand with silt (SP-SM) was encountered by A-2 to its boring termination depth of 6 feet. The soils within the upper approximate 2.5 to 4 feet at the locations of Borings A-1 and A-2 were very loose. Below these depths the strength of the soils significantly increased.

Borings C-1 through C-4, performed within the CR 229 roadway, were performed through asphalt and base course and encountered loose to medium dense fine sand (SP), fine sand with silt (SP-SM), and fine sand with clay (SP-SC) throughout the 6-foot reaches of the borings. As an exception, medium dense clayey fine sand (SC) was present within the lower approximate 1 to 1.5 feet of explored profiles at C-1 and C-2 locations. Asphalt at the locations of Borings C-1 through C-4 varied between 3.4 and 4.1 inches. Base course varied between 5.25 and 7.5 inches. Base course consisted of a sand/gravel mix.

4.2 Groundwater Level

The groundwater level was measured at the locations of the SPT borings (B-1 and B-2), and roadway borings (C-1 through C-4), at depths varying between 3.25 and 5.25 feet below the surface. The groundwater level at the location of Boring B-1 appeared to be perched. The groundwater level at the locations of Borings A-1 and A-2, performed at the eastern and western mouths of the existing culvert, was measured at a depth of 0.5 feet below the surface. The depth of the groundwater level encountered at each boring location are presented on the Subsurface Profiles in Appendix A. It should be anticipated that the groundwater levels will become elevated above the measured levels during wetter periods of the year, especially at the culvert locations.

5.0 CULVERT EXTENSION AREA RECOMMENDATIONS

5.1 General

The following recommendations are made based upon a review of the attached soil test data, our understanding of the proposed construction, and experience with similar projects and subsurface conditions. If the project information as stated in this report changes significantly, we request the opportunity to review and possibly amend our recommendations with respect to those changes. Please report to us any conditions encountered during construction that were not observed during the performance of the borings. We will review, and provide additional evaluation as required.

5.2 Soil Parameters

We have provided in Appendix B the recommended soil parameters for design of the proposed culvert extensions. The parameters are based on the results of the soil borings, laboratory testing, and experience with similar projects. The discussion below addresses the various required parameters for culvert design which are listed in Appendix B.

5.2.1 Soil Unit Weights

The unit weights of the soil are estimated based on the types of fill soils that will be utilized for the project, as recommended in this report and based on FDOT guidelines. Unit weights for dry soil, saturated soil, and buoyant soil are provided. The unit weights are utilized to calculate the vertical effective stress at desired depths.

5.2.2 Angle of Internal Friction

In general, there are two general components of soil strength: (1) friction; and (2) cohesion. The angle of internal friction is a metric of sliding resistance along a soil failure plane, thereby representing the frictional component.

5.2.3 Cohesion

Cohesion is the other component of soil strength, besides friction, as discussed above. It is a measure of soil strength that results from attraction between individual particles of clay

and/or silt, unlike strength from frictional characteristics resulting in the Angle of Internal Friction, discussed above.

5.2.4 Lateral Earth Pressure Coefficients

Estimates of the at-rest, active, and passive lateral earth pressure coefficients have been provided. In general, the at-rest coefficient is applied typically when an earth retaining structure is designed to not move laterally. When the earth retaining structure does not move laterally, the soil adjacent to the retaining structure does not transition into a passive or active state. Active coefficients are typically applied when a retaining structure is expected to move laterally somewhat, in a direction away from the adjacent earth (soil relaxes and is in tension, somewhat). When this occurs, the soil transitions from the at-rest condition into an active condition. Conversely, when a retaining structure is expected to move laterally into the adjacent soil (basically compressing the adjacent soil), passive earth pressure coefficients are utilized. For both the active and passive conditions to occur, lateral movement of the retaining structure is required. Please note the lateral movement that is required is relatively small, well below movement that would constitute soil failure.

5.2.5 Modulus of Subgrade Reaction

The Modulus of Subgrade Reaction is a conceptual relationship defined as the soil pressure divided by soil deflection. It provides a linear relationship between soil resistance and pressure exerted, allowing a simplified method for calculating deflection. It is commonly used for structural design of slabs.

5.2.6 Nominal and Factored Bearing Resistance

The Nominal Bearing Resistance is typically synonymous with the ultimate bearing capacity of the foundation soils. The ultimate bearing capacity is calculated utilizing conventional bearing capacity equations, such as the Terzaghi equation. The Factored Bearing Resistance utilizes a coefficient to relate the ultimate bearing capacity to the Limit States failure stress.

5.3 Settlement Estimates

Estimates of settlement as a function of foundation bearing pressure have been calculated for the culvert extensions. A graph of this relationship is provided in Appendix B.

The soils encountered typically consisted of sandy soils: fine sand, fine sand with silt, fine sand with clay, clayey and silty fine sand. A layer of consolidated clay was also encountered. No very loose/soft layers were encountered at-depth that would be indicative of significant long-term settlement. The surficial very loose soils encountered at the locations of Borings A-1 and A-2 should be over-excavated and replaced with compacted structural fill soil to preclude significant settlement (discussed in Section 5.4 below). As a result, we expect the large majority of settlement to occur upon initial maximum loading conditions.

Differential settlement results from differences in applied bearing pressures and the variations in the compressibility characteristics of the subsurface soils. Based on the subsurface conditions as determined by the borings, the recommended earthwork preparation procedures, and the limited size and anticipated rigidity of the structure, it is anticipated that differential settlements will be within tolerable limits.

5.4 Site Preparation for Culvert Extensions

The subsurface conditions encountered are adaptable for support of the proposed culvert extensions. Improvement of existing soils will be required in order to provide adequate support of the proposed culvert extensions. Earthwork preparation recommendations should follow the appropriate guidelines of the Florida Department of Transportation Standard Specifications for Road and Bridge Construction that are applicable to box culvert construction. These include, but not necessarily limited to, applicable items in Sections 410-10.

The earthwork preparation should include the over-excavation of very loose soils that were encountered at the locations of Borings A-1 and A-2. Over-excavation of unsuitable soils should be performed from within, and extending at least 5 feet beyond, the footprint of the proposed extensions. Based on the results of Borings A-1 and A-2, minimum excavation depths of 3 to 4.5 feet should be anticipated, although could vary throughout the area. Over-excavation should continue until all very loose soil and sediment have been removed. Backfill and compaction should be performed in accordance with Sections 410-10 of the Florida Department of Transportation Standard Specifications for Road and Bridge Construction. The contractor should anticipate the use of temporary groundwater control measures, as well as temporary surface water control measures.

6.0 PRELIMINARY PAVEMENT IMPROVEMENT RECOMMENDATIONS

As mentioned above, four auger borings (C-1 through C-4) were performed within the existing roadway. The asphalt at the locations of the borings appeared to be in good condition. The asphalt varied in thickness between 3.75 and 4.1 inches. The base course varied in thickness between 5.25 and 7.5 inches. Base course consisted of a sand/gravel mix.

Boring Location ⁽¹⁾	Asphalt Thickness (inches)	Base Course Thickness ⁽²⁾ (inches)
C-1	4.0	7.25
C-2	3.75	7.5
C-3	3.4	5.75
C-4	4.1	5.25

(1) Please refer to the Field Exploration Plan for the boring locations.

(2) The base course appeared to be a gravel-type base.

As mentioned above, the pavement appeared to be in good condition. There visually did not appear to be significant cracking, rutting, or pavement deflection at the tested locations. Photograph of the pavement at the tested locations are presented in Appendix C. Based on the results of the borings, and condition of the pavement, milling and resurfacing should be considered for pavement improvement. The pavement thickness at the tested locations ranged between 3.4 and 4.1 inches. Milling would entail the removal of the upper 1 to 2 inches.

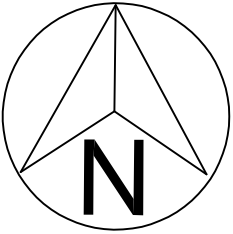
7.0 LIMITATIONS

We have conducted the geotechnical engineering in accordance with principles and practices normally accepted in the geotechnical engineering profession. Our analysis and recommendations are dependent on the information provided to us. Jackson Geotechnical Engineering is not responsible for independent conclusions or interpretations based on the information presented in this report.

APPENDIX A

BORING LOCATION PLANS

SUBSURFACE PROFILES

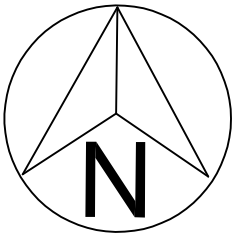


SPT Boring Location



Auger Boring Location

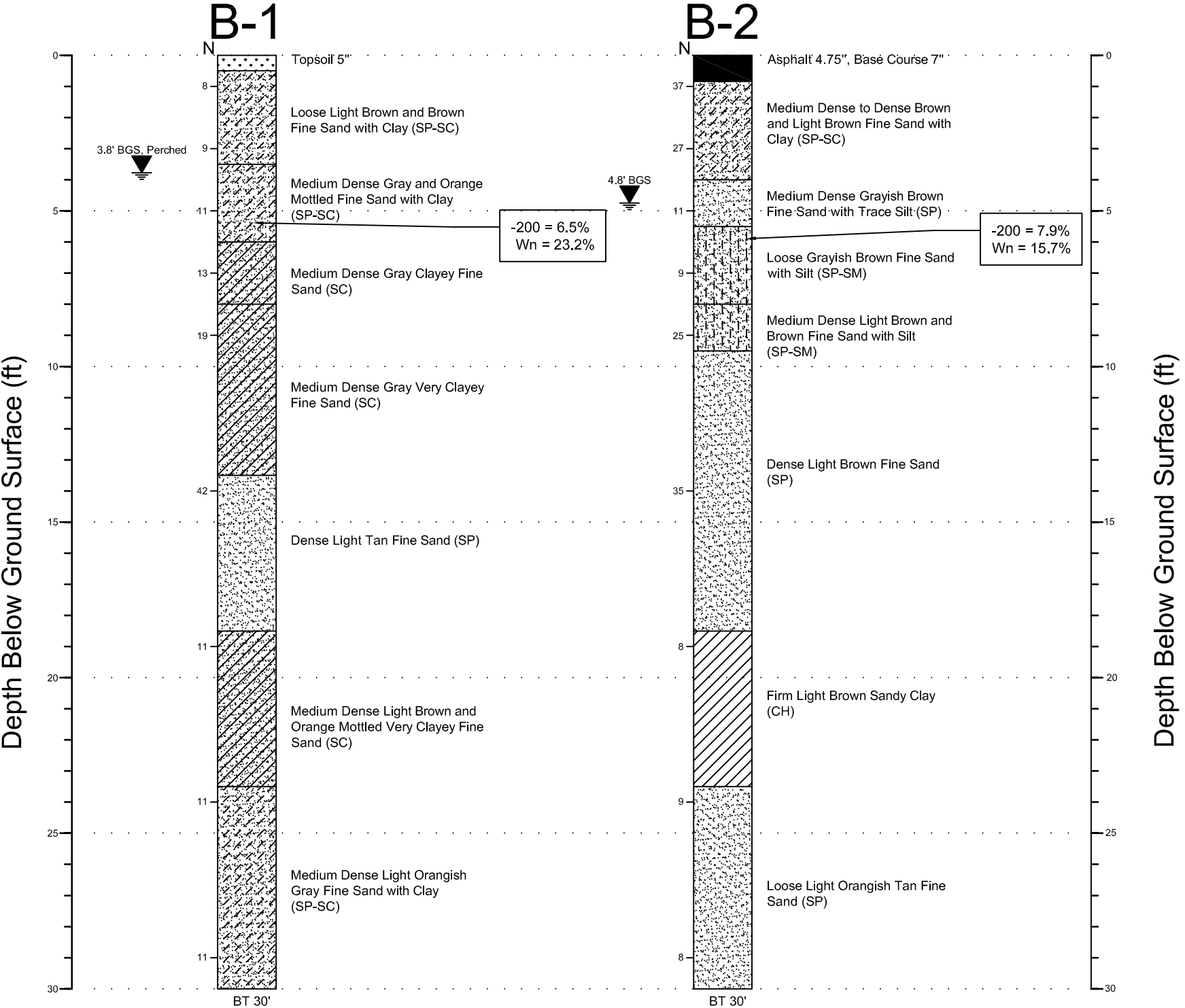
Jackson Geotechnical Engineering	
Boring Location Plan	
CR 229 Culvert Extension	
May 17, 2022	Drawn by: MJ
Project No. 22-248	Figure 1



Auger Boring Location

Jackson Geotechnical Engineering	
Boring Location Plan	
CR 229 Culvert Extension	
May 17, 2022	Drawn by: MJ
Project No. 22-248	Figure 2

Box Culvert at Earl Harvey Road



GENERAL NOTES

STANDARD PENETRATION TEST BORINGS WERE PERFORMED IN ACCORDANCE WITH ASTM D-1586. STANDARD PENETRATION RESISTANCE IS SHOWN ON THE BORINGS AT THE TEST DEPTHS IN BLOWS PER FOOT UNLESS OTHERWISE NOTED.

SUBSURFACE CONDITIONS SHOWN REPRESENT THE CONDITION ENCOUNTERED AT THE BORING LOCATIONS. ACTUAL CONDITIONS BETWEEN THE BORINGS MAY VARY FROM THOSE SHOWN. UNIFIED SOIL CLASSIFICATIONS SHOWN ON THE BORINGS ARE BASED ON VISUAL EXAMINATION AND THE LABORATORY TESTING SHOWN. GROUND SURFACE ELEVATIONS ESTIMATED FROM PROJECT CROSS SECTIONS AS APPLICABLE.

THE BORING LOCATIONS WERE NOT SURVEYED. BORING LOCATIONS WERE ESTABLISHED IN THE FIELD.

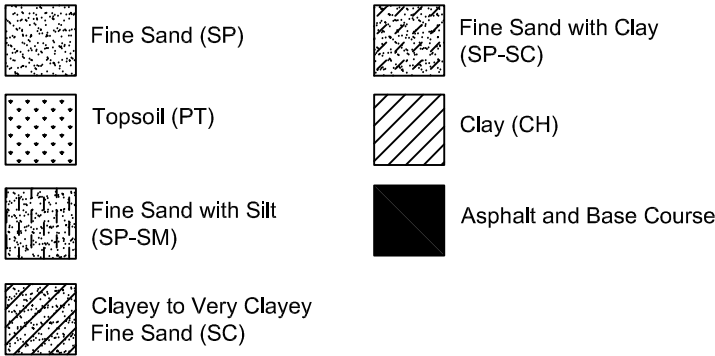
SPLIT SPOON SAMPLER:

INSIDE DIAMETER: 1.375 IN.
OUTSIDE DIAMETER: 2.0 IN.
AVERAGE HAMMER DROP:
HAMMER WEIGHT: 140 LBS.

ENVIRONMENTAL CLASSIFICATION:
SUBSTRUCTURE:
STEEL:
CONCRETE:

CORRELATION OF STANDARD PENETRATION RESISTANCE WITH RELATIVE DENSITY AND CONSISTENCY OF SOIL

GRANULAR SOILS	HAMMER N VALUE (blows per foot)	RELATIVE DENSITY
SANDS	0-3	VERY LOOSE
	4-10	LOOSE
	11-30	MEDIUM DENSE
	31-50	DENSE
	OVER 50	VERY DENSE
NON GRANULAR SOILS	HAMMER N VALUE (blows per foot)	CONSISTENCY
CLAY SILT	0-2	VERY SOFT
	3-4	SOFT
	5-8	FIRM
	9-15	STIFF
	16-30	VERY STIFF
		HARD



- 200 Percentage of Silt/Clay in Sample
- Wn Natural Moisture Content
- Groundwater Table Measured Below Ground Surface
- BGS Below Ground Surface
- BT Boring Terminated
- N SPT - N Blow Count

Jackson Geotechnical Engineering

Subsurface Profiles

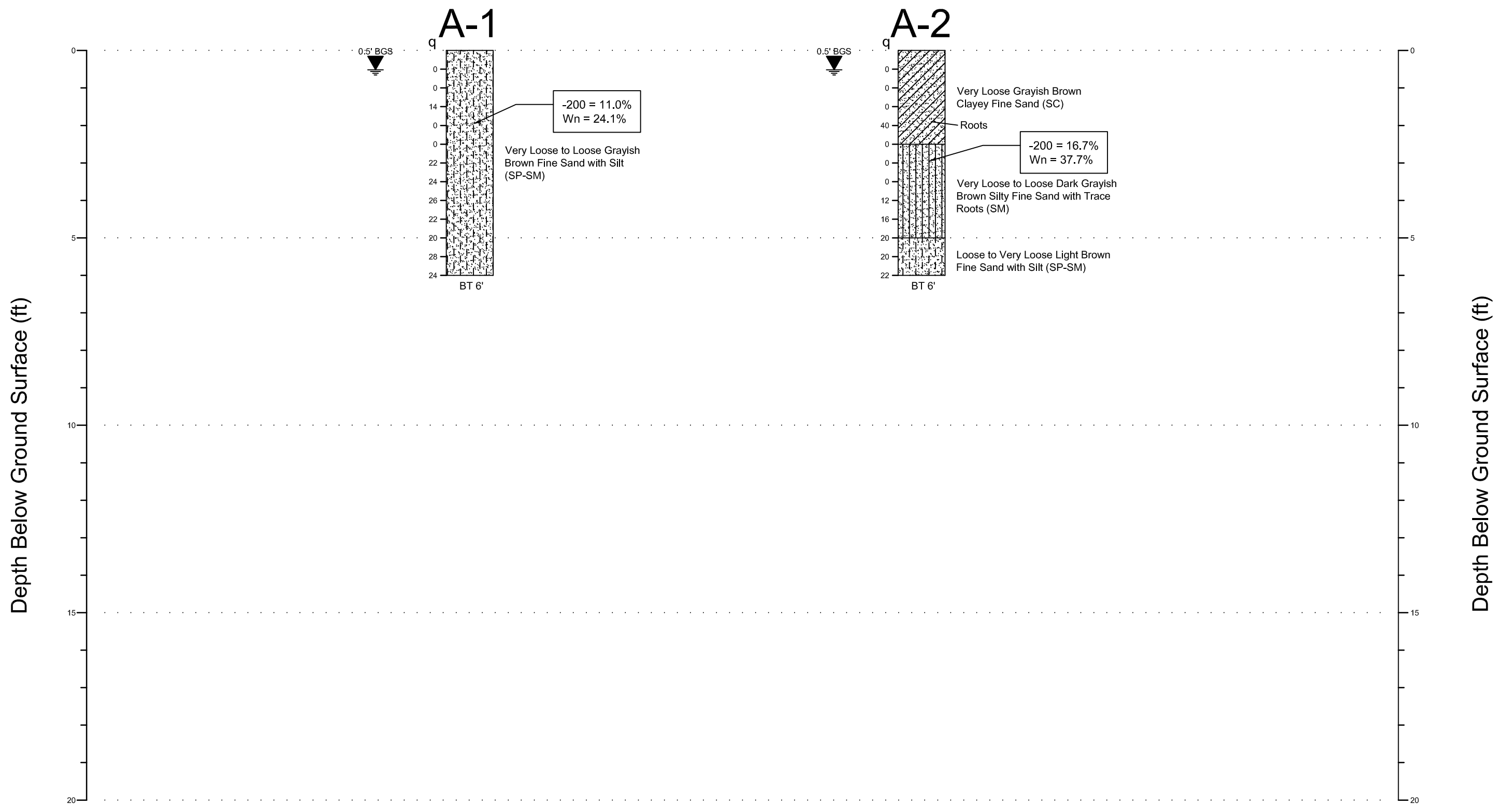
CR 229 Culvert Extension




May 17, 2022


Drawn by: MJ

Project No. 22-248

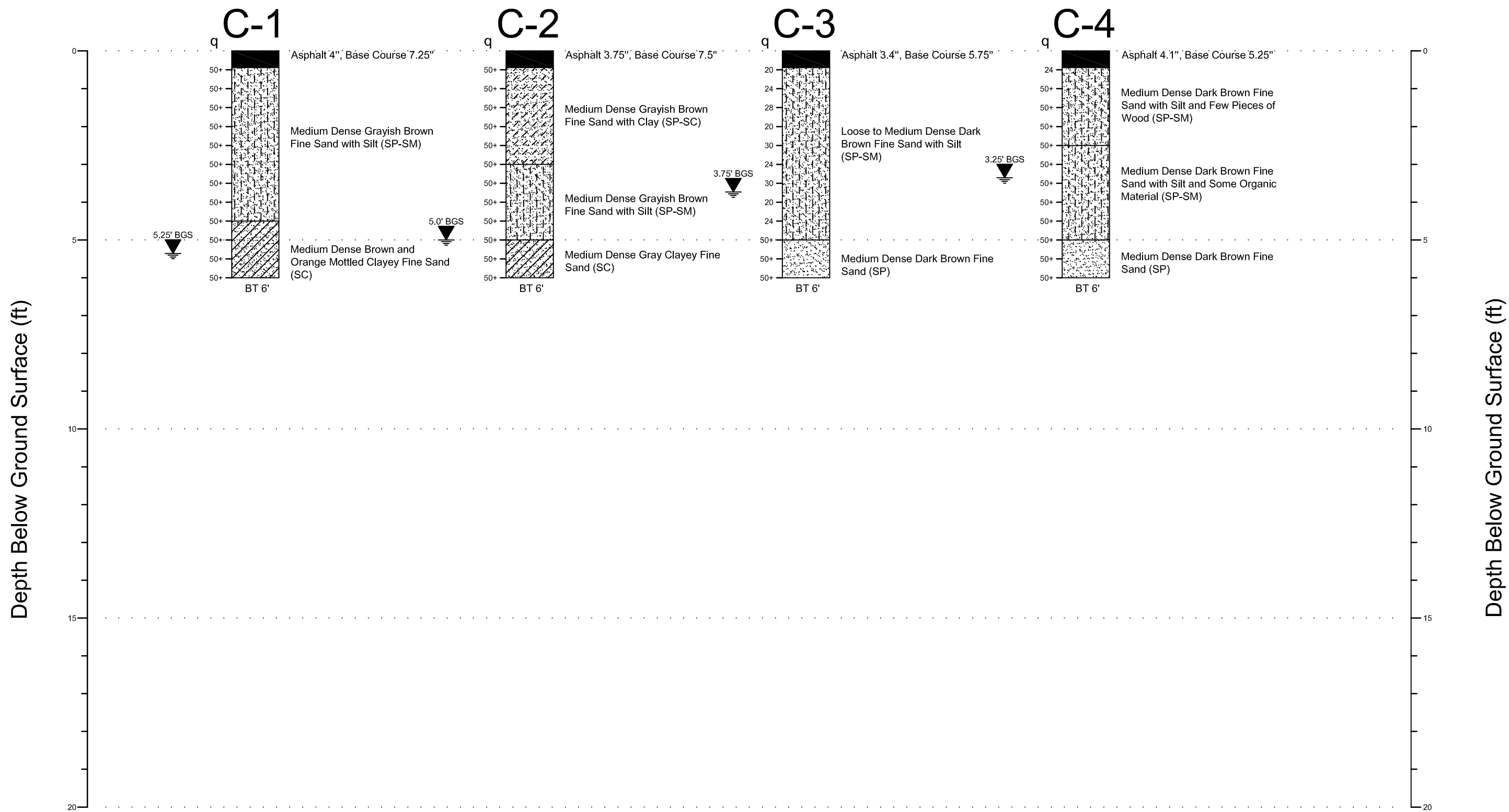
Figure 3



-  Silty Fine Sand (SM)
-  Clayey Fine Sand (SC)
-  Fine Sand with Silt (SP-SM)

- 200 Percentage of Silt/Clay in Sample
- Wn Natural Moisture Content
- q Static Cone Penetrometer Readings (TSF)
-  Groundwater Table Measured Below Ground Surface
- BT Boring Terminated
- BGS Below Ground Surface

Jackson Geotechnical Engineering	
Subsurface Profiles	
CR 229 Culvert Extension	
May 17, 2022	Drawn by: MJ
Project No. 22-248	Figure 4



- Fine Sand (SP)
- Fine Sand with Silt (SP-SM)
- Clayey Fine Sand (SC)
- Fine Sand with Clay (SP-SC)

Asphalt and Base Course

- q Static Cone Penetrometer Readings (TSF)
- Groundwater Table Measured Below Ground Surface
- BT Boring Terminated
- BGS Below Ground Surface

Jackson Geotechnical Engineering	
Subsurface Profiles	
CR 229 Culvert Extension	
May 17, 2022	Drawn by: MJ
Project No. 22-248	Figure 5

APPENDIX B

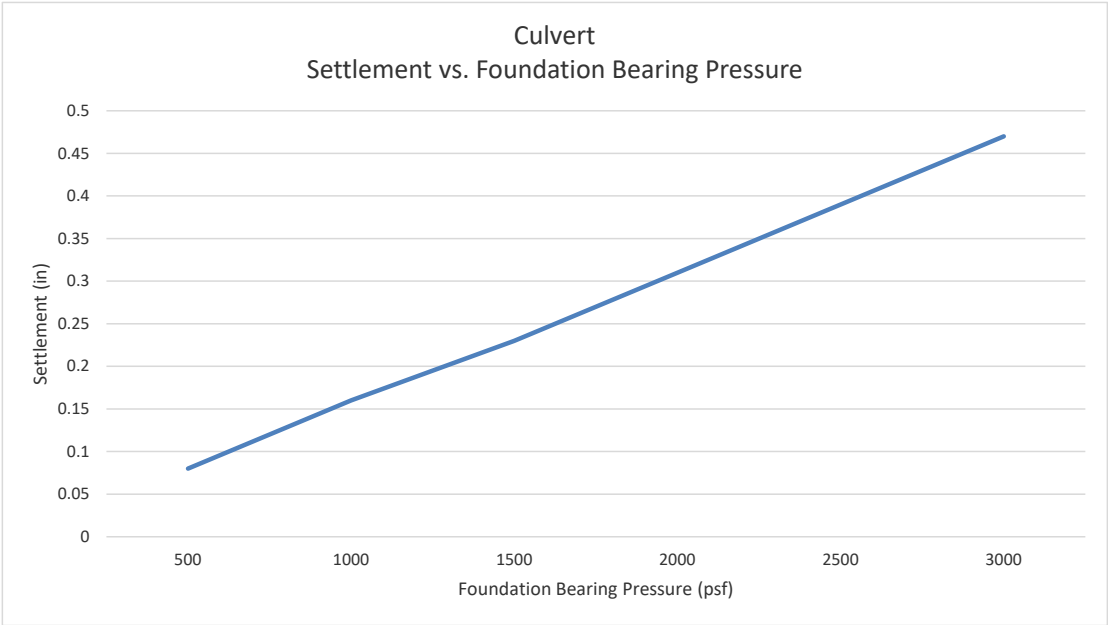
SOIL PARAMETERS FOR CULVERT EXTENSION DESIGN

ESTIMATED SETTLEMENT VS. BEARING PRESSURE

RECOMMENDED SOIL PARAMETERS FOR CULVERT EXTENSION DESIGN
County Road 229 Culvert Extension at Earl Harvey Road

Soil Type	Dry Soil Unit Weight (pcf)	Saturated Soil Unit Weight (pcf)	Buoyant Soil Unit Weight (pcf)	Angle of Internal Friction (degrees)	Cohesion (psf)	Coefficient of at-rest Lateral Earth Pressure	Coefficient of Active Lateral Earth Pressure	Coefficient of Passive Lateral Earth Pressure	Modulus of Subgrade Reaction (pci)	Nominal Bearing Resistance (psf)	Factored Bearing Resistance (psf)
Backfill	110	126	64	31	0	0.48	0.34	2.94	n/a	n/a	n/a
Foundation Soils	105	121	59	31	0	0.48	0.34	2.94	75	9,668	5,317

Notes Parameters above assume recommended earthwork preparation is performed.
Factored Bearing Resistance utilizes resistance factor of 0.55.



APPENDIX C

PHOTOGRAPHS OF PAVEMENT

**JACKSON GEOTECHNICAL
ENGINEERING, LLC**
Consulting Geotechnical Engineers



Pavement at the Location of C-1



Pavement at the Location of C-2

JACKSON GEOTECHNICAL ENGINEERING, LLC

Consulting Geotechnical Engineers



Pavement at the Location of C-3



Pavement at the Location of C-4

JACKSON GEOTECHNICAL ENGINEERING, LLC

Consulting Geotechnical Engineers

REPORT OF GEOTECHNICAL EXPLORATION CR 229 PAVEMENT CORES BAKER COUNTY, FLORIDA JGE PROJECT NO. 24-546.1

Prepared for:

Tarbox Consulting and Design, Inc.
3716 Rubin Road
Jacksonville, Florida 32257

Prepared by:

Jackson Geotechnical Engineering
164 Plaza Del Rio Drive
St. Augustine, Florida 32084

August 27, 2024

JACKSON GEOTECHNICAL ENGINEERING, LLC

Consulting Geotechnical Engineers

August 27, 2024

Mr. Troy Tarbox, P.E., CFM
Tarbox Consulting and Design, Inc.
3716 Rubin Road
Jacksonville, Florida 32257

Report of Geotechnical Exploration and Engineering Services
CR 229 Pavement Cores
Baker County, Florida
JGE Project No. 24-546.1

Dear Mr. Tarbox:

As requested, Jackson Geotechnical Engineering has completed a geotechnical exploration for the subject project. The exploration was performed to identify the existing pavement section and underlying soil conditions at selected locations, and to provide alternatives for pavement rehabilitation.

We appreciate this opportunity to be of service as your geotechnical consultant on this phase of the project. Please contact us if you have any questions, or if we may be of any further service.

Sincerely:
Jackson Geotechnical Engineering, LLC.

Jeff S. Jackson, P.E.
Licensed, Florida 51979

Table of Contents

1.0	PROJECT INFORMATION	1
1.1	SITE LOCATION AND DESCRIPTION	1
1.2	PROJECT DESCRIPTION.....	1
2.0	FIELD EXPLORATION.....	1
3.0	LABORATORY TESTING	1
4.0	GENERAL SUBSURFACE CONDITIONS	2
4.1	GENERAL SOIL PROFILE.....	2
4.2	GROUNDWATER LEVEL.....	2
5.0	EXISTING PAVEMENT	3
5.1	PAVEMENT AND GRAVEL SUBGRADE THICKNESS.....	3
5.2	PAVEMENT CONDITION	3
6.0	PAVEMENT REHABILITATION.....	4
6.1	PAVEMENT RECONSTRUCTION	4
6.2	FULL DEPTH RECLAMATION	5
6.3	MILLING AND RESURFACING	5
7.0	LIMITATIONS.....	5
APPENDIX A		6
FIELD EXPLORATION PLAN		6
SUBSURFACE PROFILES.....		6
APPENDIX B		7
PHOTOGRAPHS OF PAVEMENT CORES		7
PHOTOGRAPHS OF PAVEMENT CONDITIONS		7

1.0 PROJECT INFORMATION

1.1 Site Location and Description

The subject section of County Road 229 extends southerly from the National Forest Boundary for a distance of approximately 2.2 miles. The existing roadway includes a two-lane rural pavement section. Ditches are located adjacent to the road. A moderate embankment is present at most locations. Most connecting roadways are unimproved roads.

1.2 Project Description

Project information was provided to us during correspondence with you. Additionally, we have been provided with a copy of an aerial photograph that shows the requested testing locations.

Based on the information provided to us, we understand the proposed project will consist of improving County Road 229. The improvements are necessary due to the marginal condition of the road which has resulted from aging, traffic loading, and initial construction practices. As requested, the focus of this study was to identify at three locations the pavement components and thicknesses, and shallow subsurface conditions. Additionally, recommendations for pavement rehabilitation have been provided.

2.0 FIELD EXPLORATION

At the requested three locations, we performed two pavement cores, and two auger borings with penetrometer sounding to a depth of 6.5 feet. A 4-inch diameter pavement core was located at both outside wheel lanes. The auger borings were performed at the locations of the pavement cores. A GPS unit was utilized to locate the tested areas in the field. Subsequent to exploration, the holes were backfilled and patched with cold patch. The auger borings were conducted in accordance with ASTM D 1452. The tested locations, and the subsurface conditions encountered at each location, are presented in Appendix A on the Pavement Core Locations Plan and Subsurface Profiles, respectively.

3.0 LABORATORY TESTING

Soil samples recovered during the field exploration were visually classified in accordance with the AASHTO soil classification system. The results of the classification testing are presented on the Subsurface Profiles in Appendix A.

4.0 GENERAL SUBSURFACE CONDITIONS

4.1 General Soil Profile

The boring locations and general subsurface conditions that were encountered are presented on the Field Exploration Plan and Subsurface Profiles. When reviewing these records, it should be understood the soil conditions may change significantly at adjacent, unexplored locations. The following discussion summarizes the soil conditions encountered.

The borings were performed through cored asphalt and encountered medium dense fine sand and fine sand with silt (A-3) throughout the 6.5-foot exploration depths. As an exception, a layer of medium dense silty fine sand (A-2-4) was encountered at the location of Boring D-3, between the approximate depths of 2.25 and 4.25 feet. Medium dense clayey fine sand (A-2-6) was encountered at the locations of Borings D-3, D-4, and D-6 at depths varying from 4.25 and 5.25 feet, and extending to the boring termination depths of 6.5 feet.

Pavement thicknesses varied between 1.50 and 3.13 inches. The base course consisted of a sand/gravel mix. The sand/gravel mix varied in thickness from 7 to 13 inches.

4.2 Groundwater Level

The groundwater level was measured at the boring locations, subsequent to boring completion, at depths varying between 2.7 and 4.0 feet below existing grade. The depth of the groundwater level encountered at each boring location is presented on the Subsurface Profiles.

The groundwater table will fluctuate depending on seasonal variations, adjacent construction, surface water runoff, etc. Our estimate of the normal seasonal high groundwater level at each boring location is also presented on the Subsurface Profiles in Appendix A. Our estimates are based on the results of the soil borings, review of available published literature, and information provided for this study. Should rainfall intensity exceed normal quantities, or should other variables that affect the seasonal high groundwater level be altered, the groundwater profile at the site could change significantly.

5.0 EXISTING PAVEMENT

5.1 Pavement and Gravel Subgrade Thickness

We performed 2 pavement cores at the 3 requested locations, totaling 6 cores. The thickness of the cores and base course are presented in the table below. Please refer to the Pavement Core Locations Plan in Appendix A for the tested locations. Photographs of each core are also presented in Appendix B.

Core Location ⁽¹⁾	Asphalt Thickness (inches)	Base Course ⁽²⁾ (inches)
D-1	3.0	13
D-2	3.13	8
D-3	2.0	9
D-4	2.13	8
D-5	1.5	7
D-6	1.5	10

(1) Please refer to the Field Exploration Plan for the core locations.

(2) Base course appeared to be composed of a sand/gravel mix.

Notes: Photographs of cores are presented in Appendix B.

5.2 Pavement Condition

We observed the pavement during the field exploration operations of the subject project. The assessment of the pavement conditions observed at the three subject locations are presented below. The conditions of the pavement varied somewhat throughout the length of the roadway. In general, the condition of the pavement varied good to poor. A description of the terminology used to describe pavement conditions is presented below.

Good: Pavement that exhibits little to no cracking. Significant pavement deflection/settlement is not noted. A large percentage of the design life is available.

Moderate: Pavement that exhibits some cracking and/or minor rutting. This pavement exhibits noticeable wear, but is serviceable under typical conditions. A significant portion of its design life has been expended, but could likely provide several years of adequate performance.

Poor: This pavement condition exhibits significant amounts of cracking and/or wheel rutting. A large percentage of its serviceable life has been expended.

The table below presents our assessment of the pavement conditions at each of the three subject locations. Photographs of each of the three subject areas are presented in Appendix B.

Location	Pavement Condition
D-1 and D-2	Good
D-3 and D-4	Poor
D-5 and D-6	Poor

As noted above, good pavement conditions were noted at the location of D-1/D-2. This area does not appear to require remediation. Poor pavement conditions were noted at the locations of D-3/D-4 and D-5/D-6. Based on the field exploration performed, and the site observations, it is our opinion the noted pavement distress at the locations of D-3/D-4 and D-5/D-6 is primarily due to age, minimal pavement thickness, and lack of adequate base course. Occasional heavy truck loads have also contributed somewhat to the noted distress. Subgrade in areas exhibiting significant cracking likely has progressively been weakened as a result of surface water infiltration through the cracks and into the subgrade.

It was noted that the amount of base course aggregate in the samples at the locations of D-3/D-4 and D-5/D-6 were relatively minimal, less than that of D-1/D-2.

6.0 PAVEMENT REHABILITATION

We have provided below common options for pavement rehabilitation along the subject road exhibiting poor conditions. We recommend providing this report to an experienced contractor for review regarding cost for each option so the long-term benefit can be weighed against the cost.

6.1 Pavement Reconstruction

The method that would result in a roadway with the longest life, and minimal maintenance expectations, would be pavement reconstruction. This method would also likely be the most expensive, at least in the short term. Pavement reconstruction would include removal of the existing pavement section, application of elevating fill soils (where required), new stabilized subgrade, base course, and asphalt. Drainage improvements, if required, could also be included during new pavement construction.

6.2 Full Depth Reclamation

A viable alternative to full pavement reconstruction is full depth reclamation. This method consists of pulverizing the existing asphalt into relatively small pieces and mixing with the existing subgrade. If required, additional materials, such as base course, can be added to the reclamation process. The result is a relatively firm surface that can support new pavement. Areas with relatively thin pavement sections, and little to no base course, would require the addition of stabilizing materials (additional stabilizing materials would likely be required for the full depth reclamation performed in the pavement areas exhibiting poor conditions).

6.3 Milling and Resurfacing

It is our opinion the asphalt in poor condition is not a good candidate for milling and resurfacing. This is mainly due to the frequent cracking, and lack of a relatively rigid base course in combination with somewhat thin pavement. These conditions result in poor foundational layering which likely would lead to a pavement with deficient durability and life span.

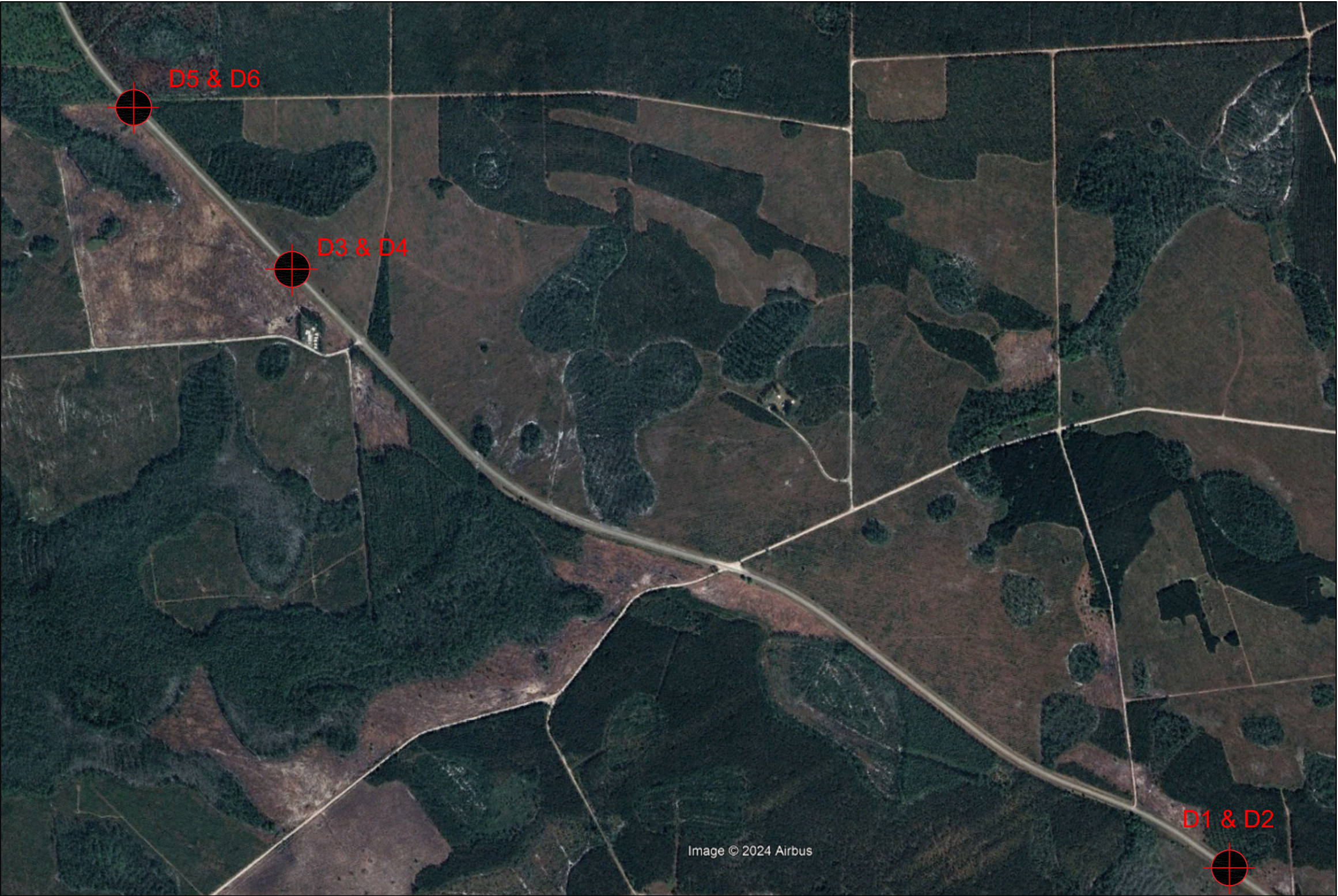
7.0 LIMITATIONS

We have conducted the geotechnical engineering in accordance with principles and practices normally accepted in the geotechnical engineering profession. Our analysis and recommendations are dependent on the information provided to us. Jackson Geotechnical Engineering is not responsible for independent conclusions or interpretations based on the information presented in this report.

APPENDIX A

FIELD EXPLORATION PLAN

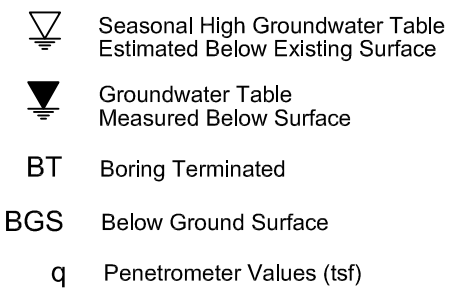
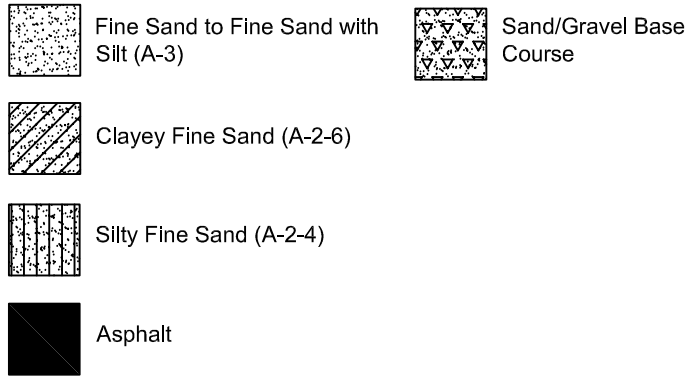
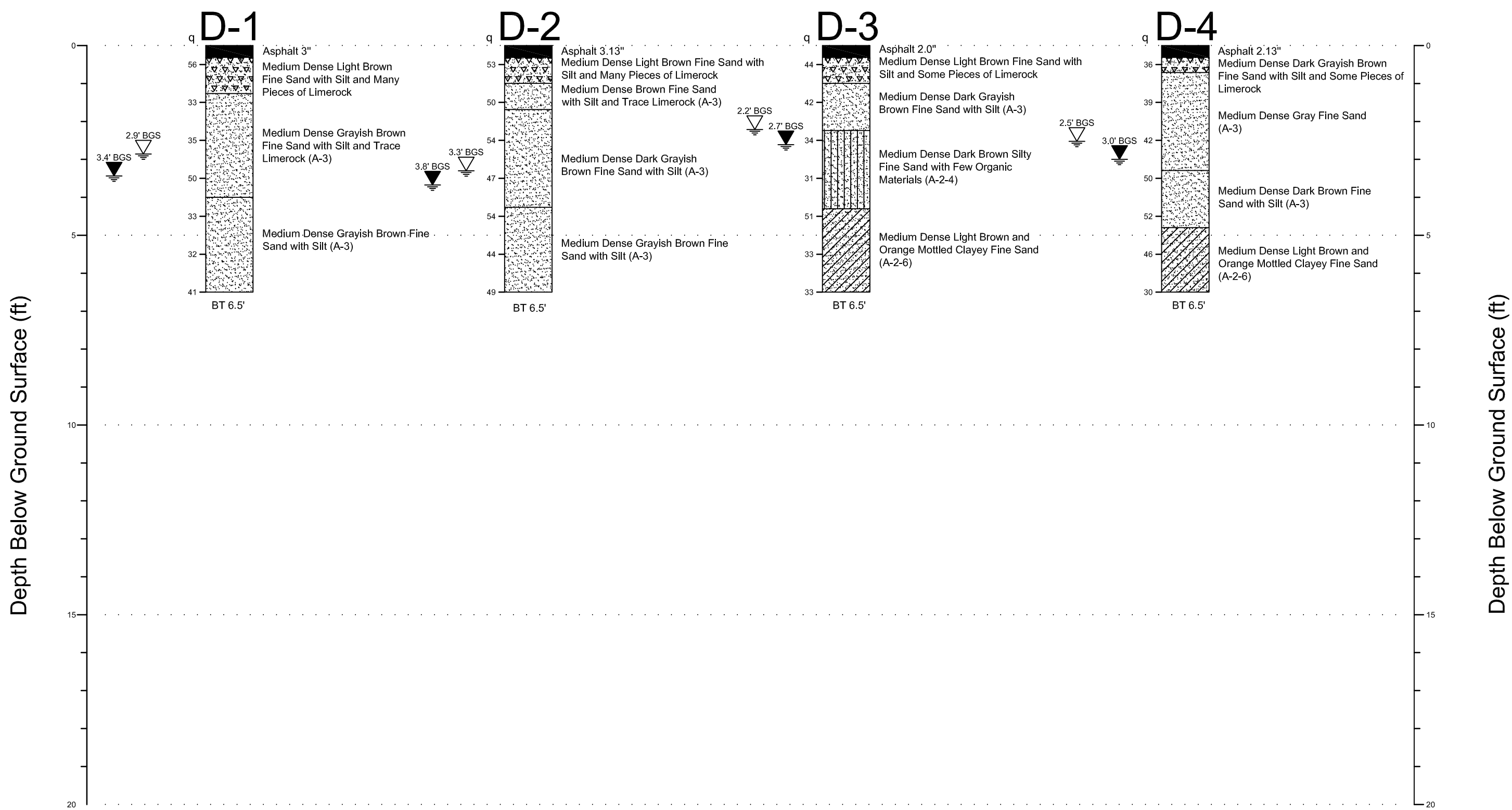
SUBSURFACE PROFILES



 Location of Pavement Cores

NOTE: D-1, D-3, and D-5 performed in southbound lane. D-2, D-4, and D-6 performed in northbound lane.

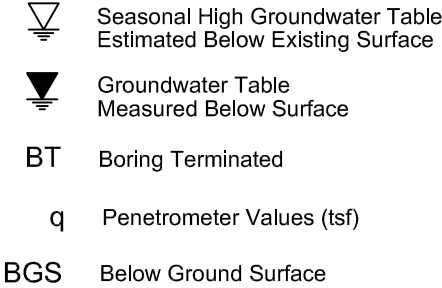
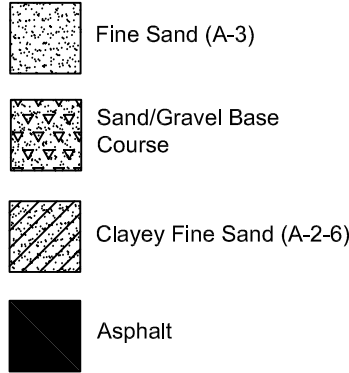
Jackson Geotechnical Engineering	
Pavement Core Locations	
CR 229	
August 25, 2024	Drawn by: MJ
Project No. 24-546	Figure 1



Jackson Geotechnical Engineering	
Subsurface Profiles	
CR 229	
August 25, 2024	Drawn by: MJ
Project No. 24-546	Figure 2

Depth Below Ground Surface (ft)

Depth Below Ground Surface (ft)



Jackson Geotechnical Engineering

Subsurface Profiles

CR 229

August 25, 2024

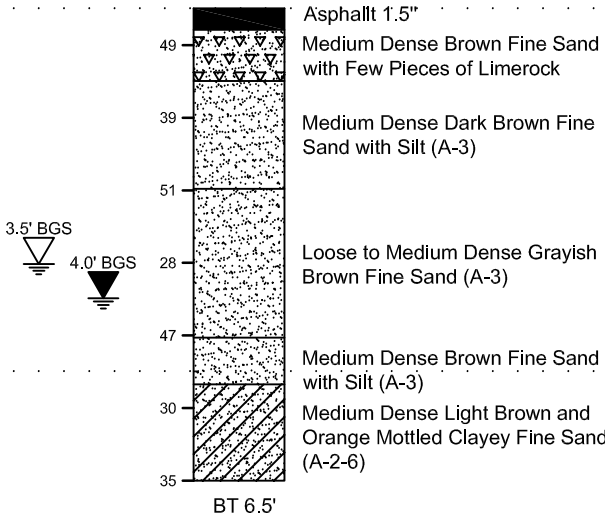
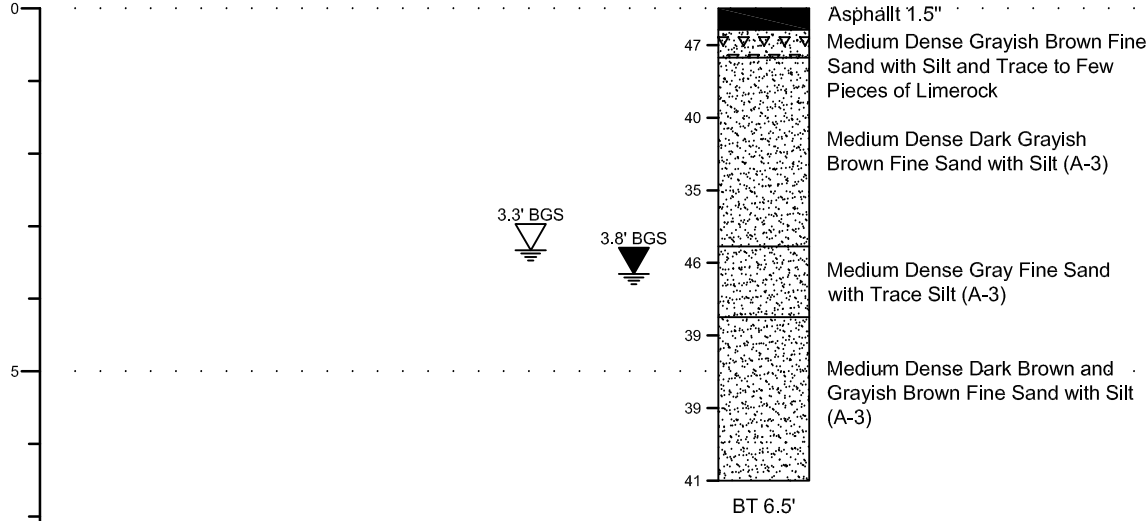
Drawn by: MJ

Project No. 24-546

Figure 3

D-5

D-6



APPENDIX B

PHOTOGRAPHS OF PAVEMENT CORES

PHOTOGRAPHS OF PAVEMENT CONDITIONS



D-1



D-1



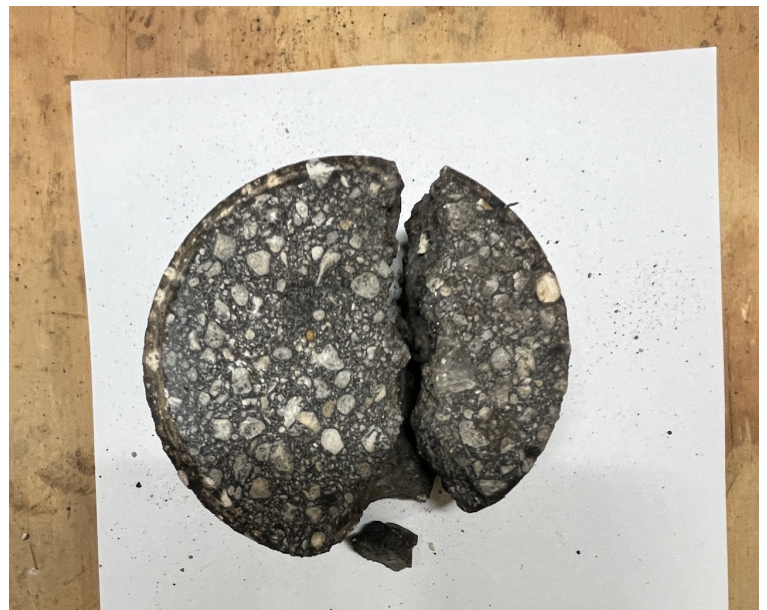
D-2



D-2



D-3



D-3



D-4



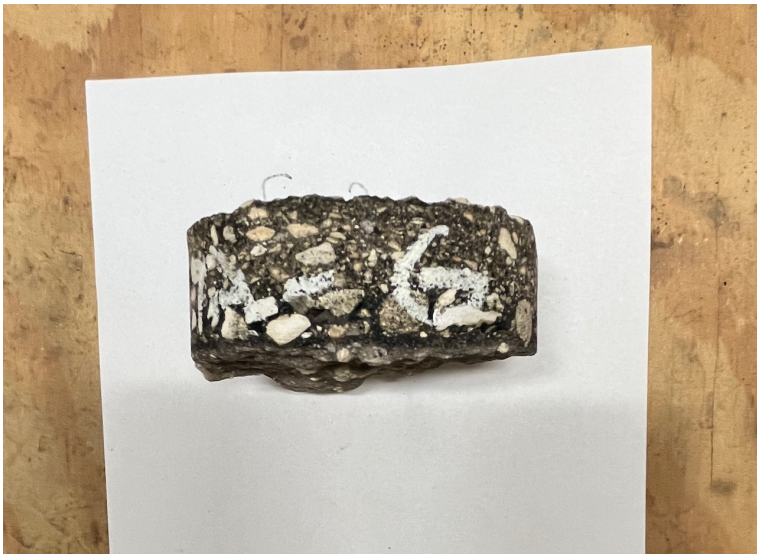
D-4



D-5



D-5



D-6



D-6



Location of D1 and D2



Location of D3 and D4



Location of D5 and D6

APPENDIX C

County Road 229 - Widening and Resurfacing Project
Baker County Project No. 2025-16

ENGINEER'S ESTIMATE OF MATERIAL QUANTITIES

ENGINEER'S OPINION OF PROBABLY QUANTITIES

County Road 229 Widening and Resurfacing Project

Baker County Project No: 2025-16

Bid Item	FDOT Pay Item Group	Item Description	Qty.	Units
1	101	Mobilization	1	LS
2	102	Maintenance of Traffic	1	LS
3	104	Erosion and Sediment Control	1	LS
4	110	Demolition		
		Removal of Cross Drain Headwalls	34	CY
		Removal of Existing Guardrail	182	LF
		Removal of Sidedrains	138	LF
		Relocate Single Post Sign	8	EA
		Remove Object Markers	17	EA
		Relocate Mailbox	11	EA
		Remove Mailbox	2	EA
5	120 & 160	Earthwork		
		Excavation - Regular	3,689	CY
		Embankment/Fill	1,410	CY
		Type B Stabilization	705	SY
6	120	Shoulder Rework	5,514	CY
7	285	Base Material		
		Widening (OBG6)	7,008	SY
		Paved Shoulders (OBG6)	4,672	SY
		Base Extension (OBG6)	1,556	SY
		Base Material for FDR (6")	10,524	CY
		Miscellaneous Asphalt (OBG 1)	50	SY
		Base Material for Side Roads (OBG6)	705	SY
		Base Material for Driveway Turnouts (OBG2)	396	SY
8	327	Milling Existing Asphalt		
		1" Milling Depth	31,546	SY
		Delivery of Salvage Material to County	1	LS
9	332	Full-Depth Reclamation		
		FDR 6"Limerock Overlay	10,524	SY

ENGINEER'S OPINION OF PROBABLY QUANTITIES

County Road 229 Widening and Resurfacing Project

Baker County Project No: 2025-16

Bid Item	FDOT Pay Item Group	Item Description	Qty.	Units
10	334	Asphaltic Pavement		
		Asphaltic Pavement (SP12.5 PG76-22)	6,578	TON
11	400	Concrete Barrier Wall with Junction Slab		
		Barrier With Jct. Slab, 36" Single Slope	85	CY
		Grade 60 Reinforcing Steel	5,040	LB
12	430	Storm - Pipe Culverts		
		18" Round	182	LF
		24" Round	81	LF
		30" Round	21	LF
		36" Round	88	LF
13	430	Storm - End Treatments		
		Conc. Collar 24" (430.001)	8	EA
		Conc. Collar 30" (430.001)	6	EA
		Conc. Collar 36" (430.001)	8	EA
		FDOT MES (430-022) SGL. 18" (4:1)	2	EA
		FDOT MES (430-021) SGL. 24" (4:1)	2	LF
		FDOT MES (430-021) DBL. 24" (4:1)	2	LF
		FDOT MES (430-021) SGL. 30" (4:1)	2	LF
		FDOT MES (430-021) QUAD 36" (4:1)	2	LF
		FDOT HEADWALL (430-030) DBL. 24"	2	LF
14	536	Guardrail		
		Guardrail - TL-3 (Std. W-Beam)	454	LF
		Guardrail - TL-3 (Nested W-Beam)	50	EA
		Guardrail - TL-3 (Nested Thrie-Beam)	50	LF
		Transition Panel (Thrie to W)	4	LF
		TL-3 Approach Transition, Conn. To Rigid	4	LF
		End Treatment - TL-3 Approach Terminal	4	EA
15	546	Rumble Strips		
		Ground-In 8" Edgeline	1,045	LF
16	570	Performance Turf		
		Performance Turf (Seed)	11,447	SY
		Performance Turf (Sod)	16,586	SY

ENGINEER'S OPINION OF PROBABLY QUANTITIES

County Road 229 Widening and Resurfacing Project

Baker County Project No: 2025-16

Bid Item	FDOT Pay Item Group	Item Description	Qty.	Units
17	700	Traffic Signage		
		F&I Single Post Sign < 12SF	12	EA
		Relocate Single Post Sign < 12SF	8	EA
18	705	Object Markers		
		Object Markers, Type 2	14	EA
19	706	Raised Pavement Markers		
		Raised Pavement Markers	971	EA
20	710 & 711	Traffic Markings		
		White Solid 6" Paint	84,306	LF
		White Solid 24" Paint	154	LF
		Yellow 6" Skip (10'/30') Paint	27,150	LF
		Yellow 6" Solid Paint	50,820	LF
21	000	Construction Bond	1	LS

Bid Item Alternates

Surface Leveling:

Alt. Bid Item	FDOT Pay Item Group	Item Description	Qty.	Units
A1	334	Surface Leveling Course (SP9.5 at 75lbs/sy)	1,182	TON

Pavement Type:

Alt. Bid Item	FDOT Pay Item Group	Item Description	Qty.	Units
A2	334	Asphaltic Pavement (SP9.5 PG76-22)	6,578	TON

APPENDIX D

County Road 229 - Widening and Resurfacing Project
Baker County Project No. 2025-16

EXAMPLE CONTRACT AND CONTRACT BOND FORM

CONTRACT

County Road 229 - Widening and Resurfacing Project
Baker County Project No. 2025-16

This Contract, made this _____ day of _____, 20_____, between the Baker County, Florida hereinafter called the County, and

_____ or his, its or their successors, executors, administrators and assigns, hereinafter called the Contractor;

WITNESSETH: That said Contractor agrees with said County, for the consideration herein mentioned, and at his, its or their own proper cost and expense, to do all the work and furnish all the materials, equipment, supplies and labor necessary to carry out this Contract in the manner and to full extent as set forth in the attached special provisions, the Bid, the Bid Plans (Plans), and Bid Documents, and under security as set forth in the attached Contract Bond, all of which are hereby adopted and made a part of this Contract as completely as if incorporated herein, and to the satisfaction of the duly authorized County Representative, who shall have at all times full opportunity to inspect the materials to be furnished and the work to be done under this Contract.

And the Contractor further agrees with said County for the sum mentioned that he, it or they shall indemnify, defend and save harmless the Florida Department of Transportation and the County of Baker from and against costs, expenses, damages, injury or loss to which the Florida Department of Transportation or the County may be subjected by reason of any wrongdoing, misconduct, want of care or skill, negligence or default, including patent infringement on the part of the Contractor, his, its or their agents or employees in the execution or performance of this Contract, including errors in plans furnished by the Contractor, and toward that end Contractor agrees to maintain at his, its or their own cost and expense such insurance as will protect it from the claims under the Workmen's Compensation Act and from any other claims for property damage, personal injury and bodily injury including death, which may arise from operations under this Contract, whether such operations be by Contractor or any subcontractor or anyone directly or indirectly employed by either of them. Contractor shall also maintain such insurance as will protect the County from any or all claims of property damage, personal injury and bodily injury including death, which may arise from operations under this Contract. Certificates of such insurance shall be filed with the County and shall be subject to its approval for adequacy of protection.

Contractor shall utilize the U.S. Department of Homeland Security's E-Verify system to confirm the employment eligibility of all persons employed by the Contractor during the term of the Contract to perform employment duties within Florida and all persons, including subcontractors, assigned by the Contractor to perform work pursuant to this Contract with the County.

Contractor shall also comply with Chapter 2010-147, Section 50, Laws of Florida, providing for preference to residents of the State of Florida and is hereby made a part of this Contract. This provision requires the Contractor to give preference to the employment of state residents, in the performance of the work on this Project if state residents have substantially equal qualifications to those of non-residents.

It is agreed that the work to be done under this Contract is for

In consideration of the foregoing premises, the County agrees to pay the Contractor for all items of work performed and materials furnished at the price of \$_____, that may be adjusted for approved additions or deletions based on Bid Unit Prices and under conditions set forth in the contract documents.

Any other provisions of the contract or agreement (the Agreement) to which this document is attached to the contrary notwithstanding, the provisions hereof take precedence over the provisions of the Agreement regardless of whether the matters addressed herein are also addressed in the Agreement, and shall be deemed an integral part of the Agreement as if set forth therein, having a force and effect of equal or superior dignity, as applicable, with the provisions thereof; provided, if provisions of the Agreement address a matter in a manner which results in a lower cost to the County than would prevail hereunder, then such provisions shall control and supersede the applicable provisions hereof. As used herein, the term "Contractor" means the vendor or other party to the Agreement providing construction, labor, materials, professional services, and/or equipment to the County thereunder; the term "County" means Baker County, a political subdivision of the State of Florida, its Board of County Commissioners, or any other name or label set forth in the Agreement identifying such entity; and the term "Parties" means the County and the Contractor together.

1. As used in this paragraph, the term "Act" means the Local Government Prompt Payment Act set forth in Part VII of Chapter 218, Florida Statutes; the term "Invoice" means a statement, invoice, bill, draw request or payment request submitted by the Contractor under the Agreement; the term "Manager" means the County Manager of the County; the term "Paying Agent" means the agent of the County to whom Invoices must be submitted if identified in the Agreement, or, if not so identified, the County's Finance Director; the term "Submittal Date" means, with respect to an Invoice, the submittal date thereof to the Paying Agent; and the term "Work" means the services rendered, or supplies, materials, equipment and the like constructed, delivered or installed under the Agreement. All payments for the Work shall be made by the County in accordance with the Act. Upon receipt of a proper Invoice, the County shall have the number of days provided in the Act in which to make payment.

(a) Promptly upon receipt of an Invoice submitted under this paragraph, the County shall date stamp the same as received. Thereafter, the County shall review the Invoice and may also review the Work as delivered, installed or performed to determine whether the quantity and quality of the Work is as represented in the Invoice and is as required by this Agreement. If the Paying Agent determines that the Invoice does not conform with the applicable requirements of the Agreement or this paragraph or that the Work within the scope of the Invoice has not been properly delivered, installed or performed in full accordance with the Agreement, the Paying Agent shall notify the Contractor in writing within ten (10) days after the improper Invoice is received that the Invoice is improper and indicate what corrective action on the part of the Contractor is needed to make the Invoice proper. The County shall pay each proper Invoice in accordance with the applicable provisions of the Act.

(b) By the submittal of an Invoice hereunder, the Contractor shall have been deemed to have warranted to the County that all Work for which payments have been previously received from the County shall be free and clear of liens, claims, security interests or other encumbrances in favor of the Contractor or any other person or entity for failure to make payment.

(c) The Parties will attempt to settle any payment dispute arising under this paragraph through consultation and a spirit of mutual cooperation. The dispute will be escalated to appropriate higher-level managers of the Parties, if necessary. If the dispute remains unresolved within thirty (30) calendar days following the Submittal Date, then the County shall schedule a meeting with the Manager and the Contractor's representative, to be held no later forty-five (45) calendar days following the Submittal Date, and shall provide written notice to the Contractor regarding the date, time and place of the meeting no less than seven (7) calendar days prior thereto. At the meeting, the Parties shall submit to the Manager their respective positions regarding the dispute, including any testimony and documents in support thereof. The Manager shall issue a written decision resolving the dispute within sixty (60) calendar days following the Submittal Date, and serve copies thereof on the Contractor's representative and the Paying Agent.

2. To the extent not otherwise expressly provided in the Agreement, any work or professional services subcontracted for by the Contractor for which the County has agreed to reimburse the Contractor shall not be marked-up, but shall be payable by the County only in the exact amount reasonably incurred by the Contractor. No other such subcontracted services shall be reimbursed.

3. To the extent not otherwise expressly provided in the Agreement, in the event the Agreement is for professional services, charged on a time basis, the County shall not be billed or invoiced for time spent traveling to and from the Contractor's offices or other points of dispatch of its subcontractors, employees, officers or agents in connection with the services being rendered.
4. To the extent not otherwise expressly provided in the Agreement, the County shall not be liable to reimburse the Contractor for any courier service, telephone, facsimile or postage charges incurred by the Contractor.
5. To the extent not otherwise expressly provided in the Agreement, the County shall not be liable to reimburse the Contractor for any copying expenses incurred by the Contractor.
6. If and only if travel and per diem expenses are addressed in the Agreement in a manner which expressly provides for the County to reimburse the Contractor for the same, then the County shall reimburse the Contractor only for those travel and per diem expenses reasonably incurred and only in accordance with the provisions of Section 112.061, Florida Statutes. In the event the Contractor has need to utilize hotel accommodations or common carrier services, the County shall reimburse the Contractor for his, her or its reasonable expense incurred thereby provided prior, written approval of the County Manager or his or her designee is obtained.
7. With respect to drawings and/or plans prepared on behalf of the County by the Contractor under the Agreement, unless specifically provided otherwise therein, complete sets of such drawings and/or plans shall be reproduced by the Contractor without cost to the County for all bidders requesting the same, and five complete sets of such drawings and/or plans shall be reproduced and delivered to the County without cost.
8. With respect to any indemnification by the County provided under the Agreement, any such indemnification shall be subject to and within the limitations set forth in Section 768.28, Florida Statutes, and to any other limitations, restrictions and prohibitions that may be provided by law, and shall not be deemed to operate as a waiver of the County's sovereign immunity.
9. In that the County is a governmental agency exempt from sales and use taxes, the County shall pay no such taxes, any other provisions of the Agreement to the contrary notwithstanding. The County shall provide proof of its exempt status upon reasonable request.
10. Any pre-printed provisions of the Agreement to the contrary notwithstanding, the same shall not automatically renew but shall be renewed only upon subsequent agreement of the Parties.

11. The Contractor acknowledges that in the budget for each fiscal year of the County during which the term of the Agreement is in effect a limited amount of funds are appropriated which are available to make payments arising under the Agreement. Any other provisions of the Agreement to the contrary notwithstanding, and pursuant to the provisions of Section 129.07, Florida Statutes, the maximum payment that the County is obligated to make under the Agreement from the budget of any fiscal year shall not exceed the appropriation for said fiscal year.

12. PUBLIC RECORDS LAW: The Contractor acknowledges the County's obligation under Art. 1, Section 24, Florida Constitution, and Chapter 119, Florida Statutes, as from time to time amended (together, the Public Records Laws), to release public records to members of the public upon request. The Contractor acknowledges that the County is required to comply with the Public Records Laws in the handling of the materials created under the Agreement and that the Public Records Laws control over any contrary terms in the Agreement. In accordance with the requirements of Section 119.0701, Florida Statutes, the Contractor covenants to comply with the Public Records Laws, and in particular to:

- (a) Keep and maintain public records required by the County to perform the services required under the Agreement;
- (b) Upon request from the County's custodian of public records, provide the County with a copy of the requested records or allow the records to be inspected or copied within a reasonable time at a cost that does not exceed the cost provided in Chapter 119, Florida Statutes, or as otherwise provided by law;
- (c) Ensure that public records that are exempt or confidential and exempt from public records disclosure requirements are not disclosed except as authorized by law for the duration of the Agreement term and following completion of the Agreement if the Contractor does not transfer the records to the County; and,
- (d) Upon completion of the Agreement, transfer, at no cost, to the County all public records in possession of the Contractor or keep and maintain public records required by the County to perform the services. If the Contractor transfers all public records to the County upon completion of the Agreement, the Contractor shall destroy any duplicate public records that are exempt or confidential and exempt from public records disclosure requirements. If the Contractor keeps and maintains public records upon completion of the Agreement, the Contractor shall meet all applicable requirements for retaining public records. All records stored electronically must be provided to the County, upon request from the County's custodian of public records, in a format that is compatible with the information technology systems of the County.

13. The Contractor's failure to comply with the requirements of paragraph 12 shall be deemed a material breach of the Agreement, for which the County may terminate the Agreement immediately upon written notice to the Contractor.

14. The Contractor acknowledges the provisions of Section 119.0701(3)(a), Florida Statutes, which, as applicable to the County and the Contractor, require as follows:

- (a) A request to inspect or copy public records relating to the Agreement must be made directly to the County. If the County does not possess the requested records, the County shall immediately notify the Contractor of the request, and the Contractor must provide the records to the County or allow the records to be inspected or copied within a reasonable time.
- (b) If the Contractor does not comply with the County's request for records, the County shall enforce the contract provisions in accordance with the Agreement.
- (c) If the Contractor fails to provide the public records to the County within a reasonable time, the Contractor may be subject to penalties under Section 119.10, Florida Statutes.

15. IF THE CONTRACTOR HAS QUESTIONS REGARDING THE APPLICATION OF CHAPTER 119, FLORIDA STATUTES, TO THE CONTRACTOR'S DUTY TO PROVIDE PUBLIC RECORDS RELATING TO THE AGREEMENT, CONTACT THE CUSTODIAN OF PUBLIC RECORDS AT (904) 259-3613, Sara Little sara.little@bakercountyfl.org, 55 NORTH 3RD STREET, MACCLENY, FLORIDA 32063.

16. As used in this paragraph, the term "Statute" means Section 287.135, Florida Statutes; the term "Certification" means a certification submitted by the Contractor under subsection (5) of the Statute in connection with submitting a bid or proposal for the Agreement or entering into or renewing the Agreement; and the term "Qualified Contract" means a contract with the County for goods or services of \$1 million or more.

- (a) If the Agreement is a Qualified Contract entered into or renewed on or before September 30, 2016, then the County shall have the option of terminating the Agreement if the Contractor:
 - i. is found to have submitted a false Certification;
 - ii. has been placed on the Scrutinized Companies with Activities in Sudan List or the Scrutinized Companies with Activities in the Iran Petroleum Energy Sector List as referred to in subsection (2) of the Statute; or,
 - iii. has been engaged in business operations in Cuba or Syria as defined in subsection (1) of the Statute.

(b) If the Agreement is a Qualified Contract entered into or renewed on or after October 1, 2016, then the County shall have the option of terminating the Agreement if the Contractor:

- i. is found to have submitted a false Certification;
- ii. has been placed on the Scrutinized Companies that Boycott Israel List as referred to in subsection (2) of the Statute, or is engaged in a boycott of Israel as defined in subsection (1) of the Statute;
- iii. has been placed on the Scrutinized Companies with Activities in Sudan List or the Scrutinized Companies with Activities in the Iran Petroleum Energy Sector List as referred to in subsection (2) of the Statute; or,
- iv. has been engaged in business operations in Cuba or Syria as defined in subsection (1) of the Statute.

By: _____ (Signature)

Chairman of Board of County Commissioners

_____ (Written)

Attest: _____ (Signature)

Sara Little, County Manager

Affix County Seal:

Contractor (Written)

By: _____ (Signature)

President

_____ (Written)

Affix Corporate Seal:

CONTRACT BOND FORM

County Road 229 - Widening and Resurfacing Project
Baker County Project No. 2025-16

Performance and Payment Sureties shall be attached to this Contract Bond Form

Principal or Contractor _____, and

Surety _____ are held

firmly bound unto the Board of County Commissioners, Baker County, Florida and their successors in office (hereinafter called the Board), in the full and just sum of 200 PERCENT (200%) of the Contract Amount (100% for Performance Bond and 100% for Payment Bond) for a total amount of _____ dollars

(\$ _____) in lawful money of the United States of America to be paid to the Board, to which payment well and truly to be made we bind ourselves, our heirs, executors, administrators, successors and assigns, jointly and severally and firmly by these presents:

WHEREAS, the above-bounden Principal has subscribed to a Contract with the Board, to bear the date of _____ day, _____, 20_____, for constructing or otherwise improving miscellaneous public works repair projects in Baker County, particularly known as Baker County Project Number 2019-03, upon certain terms and conditions in said Contract more particularly mentioned; and WHEREAS, it was one of the conditions of said Contract that these presents shall be executed;

NOW, THEREFORE, the condition of this obligation is such that if the above bounden Principal in all respects shall, comply with all the terms and conditions of said Contract, and his obligations thereunder, including the Standard Specifications, Special Provisions, Proposal, and Plans therein referred to and made a part thereof, and such alterations as may be made in said Plans and Specifications, as therein provided for; and, further, if such Contractor shall promptly make payment to all persons supplying labor, materials, equipment and supplies, used directly or indirectly by the said contractor or any Subcontractor (s) in the prosecution of the work provided for in said Contract, and promptly shall pay all State Workmen's Compensation and Unemployment Compensation taxes incurred in the performance of the said contract, and shall pay to the Board double any amount in money or property the Board may lose or be overcharged or otherwise defrauded of by reason of any wrongful or criminal act of the Contractor, its agents, or employees, then this obligation to be void; otherwise, to be and remain in full force and virtue in law.

CONTRACT BOND FORM

County Road 229 - Widening and Resurfacing Project
Baker County Project No. 2025-16

Performance and Payment Sureties shall be attached to this Contract Bond Form

WITNESS the signature of the Principal (Contractor) and the signature of Surety by
Principal or Contractor _____, and its
Surety (Agent or Attorney-In-Fact) _____,
with the seals of said Principal and Surety hereunto affixed this _____ day of
_____, 20 _____

Principal or Contractor:

By: _____ (Signature)
President

_____ (Written)

Affix Corporate Seal:

Surety:

By: _____ (Signature)

_____ (Written)

Affix Surety's Corporate Seal:

Power of Attorney showing authority of Surety's Agent or Attorney-in-Fact is to be attached

APPENDIX E

County Road 229 - Widening and Resurfacing Project
Baker County Project No. 2025-16

SUPPLEMENTAL SPECIFICATIONS

FULL DEPTH RECLAMATION.

(REV 7-8-14)

The following new Section is added after Section 330:

SECTION 332 FULL DEPTH RECLAMATION

332-1 Description.

This work shall consist of the preparation of a base course constructed by in-place pulverizing and blending of the existing bituminous pavement and base materials, and the introduction of asphalt emulsion or foamed asphalt and other additives, if called for in the mix design. Pulverize existing asphalt pavement and base material by a method that does not damage the material below the design depth as shown on the plans.

332-2 Materials.

332-2.1 Asphalt Emulsion: If the mix design calls for stabilization with asphalt emulsion, utilize CSS-1h or CMS-2h, meeting the requirements of AASHTO M 208-01 (2009) and approved by the State Materials Office prior to use.

332-2.2 Foamed Asphalt: If the mix design calls for stabilization with foamed asphalt utilize an asphalt binder meeting the requirements of Section 916 and listed on the Department's Approved Products List.

332-2.3 Sampling, Certification, and Verification: At any time during the project, the Engineer may sample and test the asphalt emulsion or asphalt binder delivered to the project to verify and determine compliance with specification requirements. Where these tests identify material outside specification requirements, the Engineer may require the supplier to cease shipment of the product. Further shipment of the product will remain suspended until the cause of the problem is evaluated and corrected by the supplier to the satisfaction of the Engineer.

332-2.4 Water: The water for the base course compaction and foaming additive (if used) shall meet the requirements of Section 923.

332-2.5 Portland Cement: Portland cement in either a dry or slurry form may be added to the reclaimed mixture if required by the mix design. Slurry made from Portland cement shall contain a minimum of 30% dry solids content. Cement used for full depth reclamation shall be Type I or II and comply with Section 921. Cement shall be limited to no more than 1.5 percent by dry weight of reclaimed material. Cement amounts greater than 1.5 percent will only be allowed if approved by the Engineer.

332-2.6 Documents: Provide copies of all materials delivery tickets to the Engineer upon materials delivery to the project site.

332-3 Mix Design.

Prior to construction, obtain an adequate number of core samples to develop the mix design(s). Representative samples of the asphalt pavement material, underlying base material, and virgin materials, where applicable, shall be supplied to a nationally accredited laboratory for testing to determine the proportions of asphalt emulsion or foamed asphalt, and other additives, if necessary, needed to produce a mix design meeting the requirements of

Table 332-1. The optimum binder content shall be the binder content that results in the highest wet tensile strength while also having 70% retained tensile strength compared to the dry strength and additionally has a minimum 1800 pounds. Marshall stability. The mix design shall be signed and sealed by a professional engineer and submitted to the Engineer prior to use for approval.

Table 332-1 Mix Design Criteria		
Test	Test Method Number	Criteria
Gradation of reclaimed material	AASHTO T 27-11	Report
Determination of optimum binder content		
Compaction effort at optimum fluids content. Marshall Compactor; 50 blows/side or Superpave Gyratory Compactor, 100 mm diameter specimens, 30 gyrations. Density determination.	Asphalt Institute MS 14, Appendix F. ASTM D6926-10 AASHTO T 312-12 FM 1-T 166	Report
Marshall stability Cure at 60°C to constant weight. Test at 40°C.	ASTM D6927-06	1800 lbs. minimum stability
Resistance of compacted bituminous mixture to moisture induced damage. 55 to 75% vacuum saturation, water bath at 25°C for 23 hours, last hour in water bath at 40°C.	AASHTO T 283-07 (2011)	70% minimum retained tensile strength

332-4 Equipment.

332-4.1 Road Reclaimer: Utilize a road reclaimer specifically designed for pavement reclaiming and capable of pulverizing and mixing pavement, base materials, and subgrade soil to a depth of 16 inches. It shall have the capability of introducing and metering additives uniformly and accurately and have positive displacement pumps which can accurately meter the planned amount of asphalt emulsion or foamed asphalt into the mixture. The reclaiming machine shall mix the emulsified or foamed asphalt additive thoroughly with the RAP and soil materials. The pump shall be interlocked with the ground speed of the machine. The asphalt metering system and water metering system shall be capable of continuously monitoring flow and totaling the quantity of water and asphalt applied into the mixing chamber. Additives, if specified, shall be uniformly distributed and mixed with the pulverized material and any existing underlying material.

332-4.2 Motor Grader: Utilize a motor grader of sufficient size and horsepower to adequately rough grade the pulverized base and rough and finish grade the mixed and compacted base. The equipment shall be in good working order free from leaks and capable of maintaining an accurate grade and cross-slope.

332-4.3 Rollers: Utilize rollers in good working order free from leaks and capable of compacting the mix to the requirements of this specification.

332-4.4 Additional equipment: Utilize additional equipment as needed to complete the work in the contract.

332-5 Construction.

332-5.1 Layout: The Contractor will be responsible for the string lining and layout of the roadway prior to paving. Elevations of the existing roadway must be referenced at sufficient intervals to ensure the roadway elevation is not changed in any location after the final surface is placed. Maintain roadway elevations except for cross slope correction or as approved by the Engineer.

332-5.2 Weather and Seasonal limitations: Do not mix or place the base while the air temperature is below 40°F or when conditions indicate that the temperature may fall below 40°F within 24 hours. Do not mix or place the base when the weather is foggy or rainy or when the soil or subgrade is frozen.

332-5.3 Widening: When the existing base is to be widened, excavate the shoulder from the edge of the existing pavement to at least six inches beyond the planned new width of the base prior to pulverization. Maintain the bottom of the trench free of loose soil and vegetation.

Place approved base material (materials listed in FDOT Design Standard Index 514 as General Use Optional Base Materials) onto the existing pavement so it can be mixed in with the existing pavement and base material during the pulverization operation to make a homogeneous base course across the entire width of the road, including the widening area. Correct all areas of irregular grade or deficient thickness and remove and replace material contaminated with soil, organic material, or debris.

332-5.4 Additional Material: When additional material is to be added to correct cross slope deficiencies or change elevation as directed by the Engineer, use approved base material (bases listed in FDOT Design Standard Index 514 as General Use Optional Base Materials) placed on the roadway prior to the final pass for pulverization and mix uniformly with the existing material.

332-5.5 Pulverization: Pulverize and blend the existing pavement and base material to the depth required so that all of the material shall be uniformly graded in accordance with AASHTO T 27-11 to meet the requirements of Table 332-2.

Table 332-2 Gradation Requirements for Pulverized Material	
Sieve Size	Minimum Percent Passing
3 inches	100
2 inches	95
No. 4	55
No. 200*	5

*For asphalt emulsion, the maximum allowable percent passing the No. 200 sieve is 20%.

Material gradation may vary due to local aggregates and conditions. A minimum of two passes of the reclaimer is required. Additional passes may be necessary to achieve the required gradation.

Remove pulverized material to the depth shown on the plans.

Introduce the asphalt emulsion or foamed asphalt into the mix through the reclaimer uniformly and accurately metered such that areas are of equal consistency and moisture content. Combine the reclaimed material and additives in place to meet the requirements specified in such proportions that the reclaimed mixture is of acceptable

composition and stability. Before the start and at the end of each day's work and at any time requested, permit the Engineer access to the mixing equipment in order to read the meter to verify the quantity of asphalt emulsion applied during the day's work. Make field adjustments, as necessary, to the mix design under the guidance of a knowledgeable and competent technician or superintendent to obtain a satisfactory reclaimed mixture of consistent composition and stability throughout the project.

332-5.6 Compaction: After the material has been processed, compact the base course to the lines, grades, and depth required. Apply water as necessary to ensure optimum moisture content at the time of mixing and compaction.

Construct a control strip of not less than 500 feet to develop proper rolling/compaction patterns and methods to obtain the required density. Obtain density readings using a nuclear gauge in accordance with FM 1-T 238, while witnessed by the Engineer. Whenever there is a change in the reclaimed material, compaction method, equipment, or unacceptable results occur, construct a new control strip. Begin rolling at the low side of the course, except leave three to six inches from any unsupported edge or edges unrolled initially to prevent distortion.

Furnish the proper number, weight and type of rollers to obtain the required compaction of the reclaimed material. Compact the base course to a field dry density (i.e. corrected gauge wet density) of at least 96.0 percent of the maximum laboratory dry density.

Correct any pavement shoving or other unacceptable displacement. Take care in rolling the edges of the reclaimed mixture so the line and grade of the edges are maintained.

At the end of each day's production, construct a transverse joint formed by a header or by cutting back into the compacted material to form a true vertical face free of loose material. Protect construction joints so that the placing, spreading, and compacting of base material will not damage previous work. Where it is necessary to operate or turn any equipment on the completed base course, protect and cover the finished surface using mats or wood planks to prevent damage.

332-5.7 Thickness: Construct the base to a daily average thickness within 1/2 inch of the plan thickness. Individual measurements may deviate from the plan thickness by 3/4 inch. Measure the thickness while being witnessed by the Engineer. When the thickness is not within the tolerances given, the Engineer will evaluate the area and determine if it shall be reconstructed at the Contractor's expense or the deficiency deducted from the total material in place.

332-5.8 Finishing: After completing all base course operations, assure the base course conforms to the required lines, grades, and cross section. If necessary, lightly scarify the surface to eliminate any imprints made by equipment and then recompact the surface to the required density. Correct all straightedge or surface irregularities greater than 1/2 inch over 10 feet to the satisfaction of the Engineer.

332-5.9 Protection and Curing: Protect and cure the completed base course by applying a prime coat meeting the requirements of Section 300 at a rate of 0.15 to 0.25 gallons per square yard. Apply the prime coat no later than 24 hours after the completion of finishing operations. Keep the finished base course continuously moist until the prime coat is placed. At the time the prime coat is applied, ensure the surface is dense, free of all loose and extraneous material, and contains sufficient moisture to promote proper penetration of the bituminous material. Apply water in sufficient quantity to fill the surface

voids immediately before the bituminous curing material is applied. Cure the reclaimed base until the moisture content reduces to 2.0 percent or less.

To prevent equipment from marring or damaging the completed work, protect finished portions of base used by equipment.

Do not allow traffic on the reclaimed base until it is assured the reclaimed base surface will not distort, shove, or ravel under the anticipated vehicular loading.

332-6 Quality Control Testing.

332-6.1 Frequency: Perform the following quality control tests at the prescribed frequency. Randomly determine sample locations in accordance with ASTM D 3665-12 or equivalent. Correct all deficiencies unless otherwise approved by the Engineer.

Reclaimed material gradation: Determine the percent passing the following sieve sizes: 3 inches, 2 inches, No. 4, and No. 200. Obtain a sample at a frequency of one sample per 3,000 SY. Meet the requirements of Table 332-2. If the requirements of Table 332-2 are not met, adjust the pulverization operation so that the resultant material will meet specification requirements or to the satisfaction of the Engineer.

Moisture/density relationship of reclaimed base: Establish a wet/dry density relationship for density specification compliance by obtaining a sample at the location of each nuclear density measurement, at a frequency of once per 1000 square yards. Determine the moisture content in accordance with AASHTO T 110-03 (2011), AASHTO T 265-12, or ASTM D 4643-08.

In-place field density: Perform one nuclear density test per 1000 square yards. The dry field density (i.e. corrected gauge wet density) of the compacted mixture shall be at least 96.0 percent of the maximum laboratory dry density. No individual density test shall be lower than 92.0 percent of the maximum laboratory dry density. If one density test is below 92.0 percent or two consecutive density tests are below 96.0 percent of the maximum laboratory dry density, cease production and resolve the issue to the satisfaction of the Engineer before resuming production.

Marshall stability: Perform Marshall stability testing twice per day or once per day if less than 1500 square yards is reclaimed. Meet the requirements of Table 332-1. If the Marshall stability does not meet the requirements of Table 332-1, cease production and resolve the issue to the satisfaction of the Engineer before resuming production.

Retained tensile strength: Perform retained tensile strength testing twice per day or once per day if less than 1500 square yards is reclaimed. Meet the requirements of Table 332-1. If the retained tensile strength does not meet the requirements of Table 332-1, cease production and resolve the issue to the satisfaction of the Engineer before resuming production.

Depth of mixing: Determine the depth of mixing at least once per 250 square yards. Meet the requirements of 332-5.7.

Cross slope measurement: Meet the requirements of Table 330-4.

Additional sampling and testing may be required if significant changes in the characteristics of the reclaimed material are observed, such as a much coarser or finer gradation or a noticeable difference in asphalt content, or when there is considerable variability in the field test results.

332-7 Acceptance.

Acceptance of the material will be based on providing documentation that component materials meet the requirements of 332-2 and by quality control test results meeting the requirements of 332-6.

332-8 Basis of Payment.

332-8.1 General: The full depth reclamation shall be paid for at the Contract unit price per square yard, completed and accepted. Such price and payment shall be full compensation for performing all full depth reclamation work as described in this Section.

332-8.2 Payment: Payment will be made under:

Item No. 332-1	Full Depth Reclamation, per square yard
----------------	---

Do Not Use Without
CO Specs Authorization