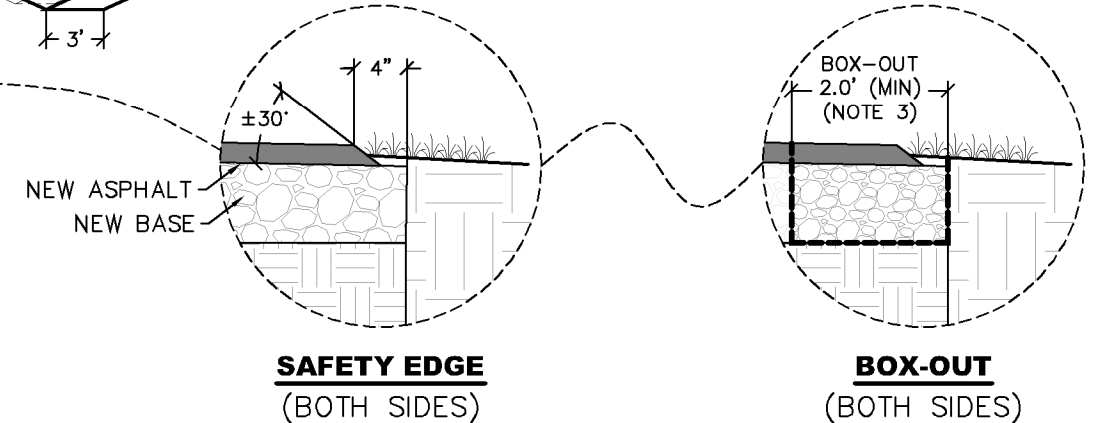
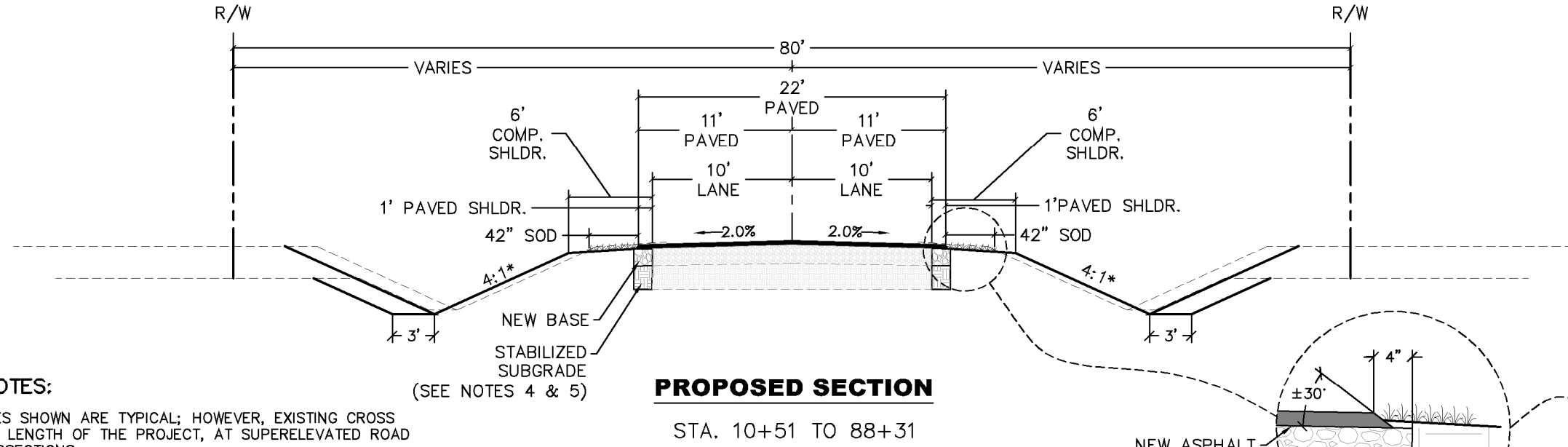
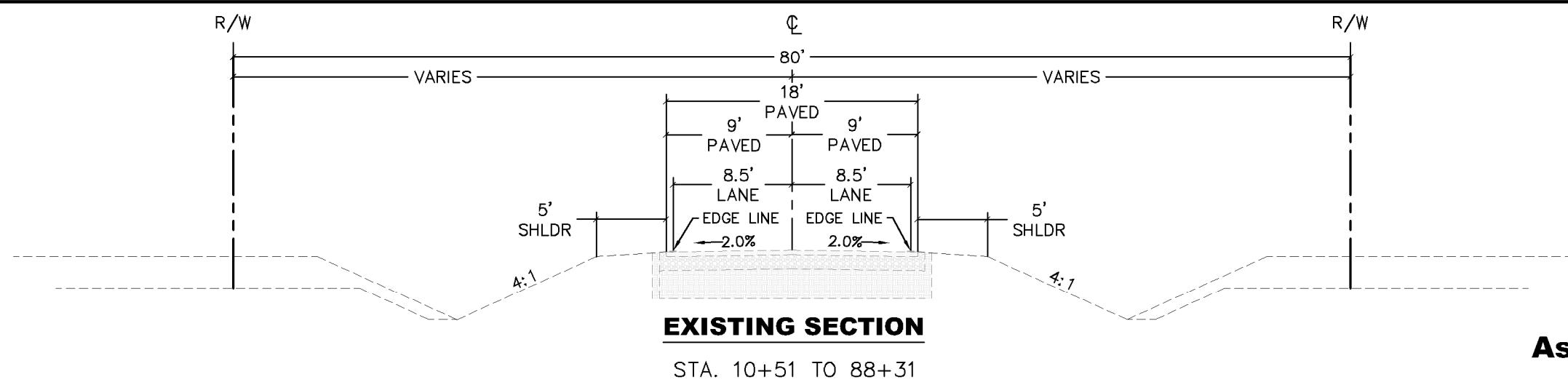


**County Road 127
Asphalt Pavement Overlay:
Segment 2
Mainline Road**



TYPICAL SECTION NOTES:

- PAVEMENT CROSS SLOPES SHOWN ARE TYPICAL; HOWEVER, EXISTING CROSS SLOPES VARY OVER THE LENGTH OF THE PROJECT, AT SUPERELEVATED ROAD SEGMENTS AND AT INTERSECTIONS.
- PAVEMENT SHALL INCLUDE BEVELED SAFETY EDGES WITH BASE CONSTRUCTED 4" BEYOND THE EDGE OF PAVEMENT (BOTH SIDES).
- A 2'-WIDE (MIN.) BOX OUT AREA IS RECOMMENDED TO AID IN CONSTRUCTABILITY.
- SHOULDER SLOPES ARE 6% TYPICAL. SHOULDER SLOPES WILL VARY IN SUPERELEVATION SECTIONS. CONTRACTOR SHALL MAINTAIN EXISTING SHOULDER SLOPES IN CONFORMANCE WITH FDOT INDEX 000-510. IN NO CASE SHALL THE ALGEBRAIC DIFFERENCE BETWEEN PAVEMENT AND SHOULDER CROSS SLOPES EXCEED 7%.
- CONTRACTOR TO ASSUME THAT EXISTING ROADWAY EMBANKMENT IS STABILIZED AND THAT SUBGRADE STABILIZATION IS NOT REQUIRED FOR WIDENING OR SHOULDER REWORK. CONTRACTOR SHALL NOTIFY BAKER COUNTY, IN WRITING, IF FIELD CONDITIONS FIND OTHERWISE.
- IF COMPACTION IS REQUIRED, ALL COMPACTION FOR ANY MATERIAL SHALL BE LIMITED TO THE STATIC MODE ONLY UNLESS OTHERWISE DIRECTED BY COUNTY.
- WHERE SHOULDER REWORK IS REQUIRED, COMPLETE WORK IN ACCORDANCE WITH FDOT INDEX 570-010; HOWEVER, INSTALL A SINGLE 42"-WIDE ROW OF SOD ADJACENT TO THE FINISHED EDGE OF PAVEMENT. FINISHED GROUND ADJACENT TO THE PAVEMENT SHALL BE GRADED ±2-1/2" BELOW THE ADJACENT PAVEMENT SURFACE SO THAT THE TOP OF THE GRASS SOD MAT IS 1" BELOW THE FINISHED PAVEMENT SURFACE.
- SOD ALL DISTURBED AREAS WITH SLOPES OF 3H:1V OR STEEPER. GRASS SEED ALL OTHER DISTURBED AREAS.

* 4:1 OR LESS WITH A MAXIMUM SLOPE OF 3:1

RESURFACING

1-1/2" SURFACE COURSE SP 12.5
LEVELING COURSE SP 9.5 (75 LBS/SY)

LANE WIDENING AND PAVED SHOULDERS

3" SURFACE COURSE SP 12.5
PRIME COAT (916.3 RESIDUAL 0.10 G/SY)
OPTIONAL BASE GROUP 6
12" TYPE-B STABILIZED SUBGRADE
(SEE NOTES 4 AND 5)

GRASS SHOULDERS/SIDESLOPES

SEE NOTES 6 AND 7
ARGENTINE BAHIA GRASS (42"-WIDE ROLLS)
ARGENTINE BAHIA GRASS SEED

TRAFFIC DATA

TWO-WAY AADT	= 2,200
GROWTH RATE	= 2.0%
PERCENT TRUCKS	= 22.2%
TOTAL ESALS (20-YEAR)	= 4,418,023
TOTAL ESALS (1-YEAR)	= 181,831
TRAFFIC LEVEL	= A
POSTED SPEED	= 55 MPH
DESIGN SPEED	= 60 MPH

REVISIONS			
DATE	DESCRIPTION	DATE	DESCRIPTION
10/25/2021	FDOT COMMENTS		
3/28/2023	BID ADDENDUM #2		

Tarbox
consulting & design, inc.
WWW.TARBOXINC.COM (904) 399-1785

TROY W. TARBOX, P.E.
FLA. P.E. LICENSE NO. 50661
TARBOX CONSULTING AND DESIGN, INC.
3716 RUBIN ROAD
JACKSONVILLE, FL 32257
CERTIFICATE OF AUTHORIZATION 23132



**CR127 NORTH - PHASE 2
REHABILITATION PROJECT**

TYPICAL SECTIONS

DRAWING NO.
101