

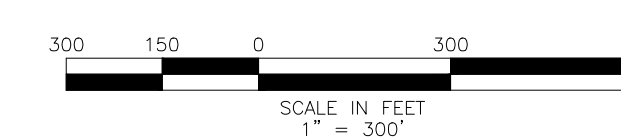
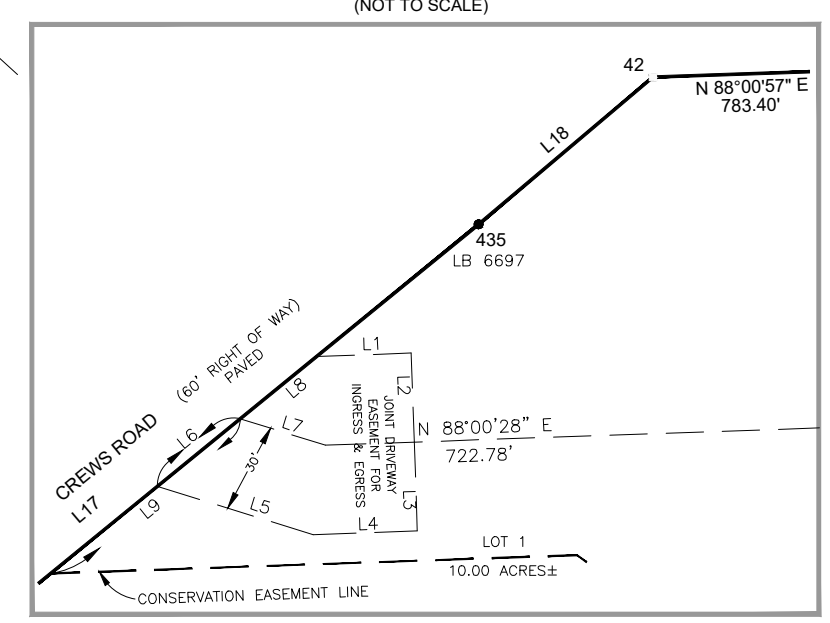
MAP SHOWING A BOUNDARY SURVEY
OF
ST. MARY'S SHOALS PHASE II
LYING IN
SECTIONS 33 AND 34 TOWNSHIP 1 SOUTH, RANGE 21 EAST
SECTIONS 2 AND 4, TOWNSHIP 2 SOUTH, RANGE 21 EAST
BAKER COUNTY, FLORIDA

LINE	BEARING	LENGTH
L1	N 88°00'27" E	31.82'
L2	S 01°59'33" E	30.00'
L3	S 01°59'33" E	30.00'
L4	S 88°00'27" W	35.08'
L5	N 72°47'13" W	55.00'
L6	N 50°48'01" E	34.65'
L7	S 72°47'13" E	30.00'
L8	N 50°48'01" E	33.29'
L9	S 50°48'01" W	82.47'
L10	N 30°28'32" W	144.48'
L11	N 04°43'26" W	184.05'
L12	N 08°38'20" W	349.12'
L13	N 11°56'10" W	94.59'
L14	N 08°12'48" W	345.21'
L15	S 81°55'58" W	30.00'
L16	N 08°04'02" W	164.30'
L17	N 50°48'01" E	250.26'
L18	N 49°48'33" E	76.95'

- LEGEND:
- = SET 1/2" IRON PIPE WITH CAP STAMPED LB 6888
 - = FOUND 1/2" IRON PIPE UNLESS OTHERWISE NOTED
 - = FOUND IRON ROD UNLESS OTHERWISE NOTED
 - = SET 4"x4" CONCRETE MONUMENT UNLESS OTHERWISE NOTED
 - = FOUND 4"x4" CONCRETE MONUMENT UNLESS OTHERWISE NOTED
 - = FOUND RAILROAD SPIKE
 - = FENCE
 - = OVERHEAD UTILITY LINES
 - = DIRT ROAD
 - = CONCRETE POWERLINE POLE
 - = GUY ANCHOR
 - = WOOD UTILITY POLE
 - = SIGN
 - = WOOD LIGHT POLE
 - R.L.S. = REGISTERED LAND SURVEYOR
 - L.D.B. = L.D. BRADLEY
 - L.S. = LICENSED SURVEYOR
 - D.B. = DEED BOOK
 - O.R.B. = OFFICIAL RECORD BOOK
 - P.L. = PAGE
 - (F) = FIELD MEASURED
 - (P) = PLAT
 - (D) = DEED
 - ID = IDENTIFICATION
 - LB = LICENSED BUSINESS

COORDINATE TABLE
STATE PLANE, FLORIDA EAST ZONE, 83/90

POINT	NORTH	EAST	LENGTH	LATITUDE	SCALE FACTOR	CONVERGENCE
1	498990.724	2703207.8467	88°10'16.0"	30°21'04.9"	0.99995206	1°10'13.780"
2	498994.8273	2702965.4917	88°10'16.7"	30°21'04.9"	0.99995207	1°10'12.811"
3	498994.8273	2702965.4917	88°10'16.7"	30°21'04.9"	0.99995207	1°10'12.811"
4	498994.8273	2702965.4917	88°10'16.7"	30°21'04.9"	0.99995207	1°10'12.811"
5	498994.8273	2702965.4917	88°10'16.7"	30°21'04.9"	0.99995207	1°10'12.811"
6	498994.8273	2702965.4917	88°10'16.7"	30°21'04.9"	0.99995207	1°10'12.811"
7	498994.8273	2702965.4917	88°10'16.7"	30°21'04.9"	0.99995207	1°10'12.811"
8	498994.8273	2702965.4917	88°10'16.7"	30°21'04.9"	0.99995207	1°10'12.811"
9	498994.8273	2702965.4917	88°10'16.7"	30°21'04.9"	0.99995207	1°10'12.811"
10	498994.8273	2702965.4917	88°10'16.7"	30°21'04.9"	0.99995207	1°10'12.811"
11	498994.8273	2702965.4917	88°10'16.7"	30°21'04.9"	0.99995207	1°10'12.811"
12	498994.8273	2702965.4917	88°10'16.7"	30°21'04.9"	0.99995207	1°10'12.811"
13	498994.8273	2702965.4917	88°10'16.7"	30°21'04.9"	0.99995207	1°10'12.811"
14	498994.8273	2702965.4917	88°10'16.7"	30°21'04.9"	0.99995207	1°10'12.811"
15	498994.8273	2702965.4917	88°10'16.7"	30°21'04.9"	0.99995207	1°10'12.811"
16	498994.8273	2702965.4917	88°10'16.7"	30°21'04.9"	0.99995207	1°10'12.811"
17	498994.8273	2702965.4917	88°10'16.7"	30°21'04.9"	0.99995207	1°10'12.811"
18	498994.8273	2702965.4917	88°10'16.7"	30°21'04.9"	0.99995207	1°10'12.811"
19	498994.8273	2702965.4917	88°10'16.7"	30°21'04.9"	0.99995207	1°10'12.811"
20	498994.8273	2702965.4917	88°10'16.7"	30°21'04.9"	0.99995207	1°10'12.811"
21	498994.8273	2702965.4917	88°10'16.7"	30°21'04.9"	0.99995207	1°10'12.811"
22	498994.8273	2702965.4917	88°10'16.7"	30°21'04.9"	0.99995207	1°10'12.811"
23	498994.8273	2702965.4917	88°10'16.7"	30°21'04.9"	0.99995207	1°10'12.811"
24	498994.8273	2702965.4917	88°10'16.7"	30°21'04.9"	0.99995207	1°10'12.811"
25	498994.8273	2702965.4917	88°10'16.7"	30°21'04.9"	0.99995207	1°10'12.811"
26	498994.8273	2702965.4917	88°10'16.7"	30°21'04.9"	0.99995207	1°10'12.811"
27	498994.8273	2702965.4917	88°10'16.7"	30°21'04.9"	0.99995207	1°10'12.811"
28	498994.8273	2702965.4917	88°10'16.7"	30°21'04.9"	0.99995207	1°10'12.811"
29	498994.8273	2702965.4917	88°10'16.7"	30°21'04.9"	0.99995207	1°10'12.811"
30	498994.8273	2702965.4917	88°10'16.7"	30°21'04.9"	0.99995207	1°10'12.811"
31	498994.8273	2702965.4917	88°10'16.7"	30°21'04.9"	0.99995207	1°10'12.811"
32	498994.8273	2702965.4917	88°10'16.7"	30°21'04.9"	0.99995207	1°10'12.811"
33	498994.8273	2702965.4917	88°10'16.7"	30°21'04.9"	0.99995207	1°10'12.811"
34	498994.8273	2702965.4917	88°10'16.7"	30°21'04.9"	0.99995207	1°10'12.811"
35	498994.8273	2702965.4917	88°10'16.7"	30°21'04.9"	0.99995207	1°10'12.811"
36	498994.8273	2702965.4917	88°10'16.7"	30°21'04.9"	0.99995207	1°10'12.811"
37	498994.8273	2702965.4917	88°10'16.7"	30°21'04.9"	0.99995207	1°10'12.811"
38	498994.8273	2702965.4917	88°10'16.7"	30°21'04.9"	0.99995207	1°10'12.811"
39	498994.8273	2702965.4917	88°10'16.7"	30°21'04.9"	0.99995207	1°10'12.811"
40	498994.8273	2702965.4917	88°10'16.7"	30°21'04.9"	0.99995207	1°10'12.811"
41	498994.8273	2702965.4917	88°10'16.7"	30°21'04.9"	0.99995207	1°10'12.811"
42	498994.8273	2702965.4917	88°10'16.7"	30°21'04.9"	0.99995207	1°10'12.811"
43	498994.8273	2702965.4917	88°10'16.7"	30°21'04.9"	0.99995207	1°10'12.811"
44	498994.8273	2702965.4917	88°10'16.7"	30°21'04.9"	0.99995207	1°10'12.811"
45	498994.8273	2702965.4917	88°10'16.7"	30°21'04.9"	0.99995207	1°10'12.811"
46	498994.8273	2702965.4917	88°10'16.7"	30°21'04.9"	0.99995207	1°10'12.811"
47	498994.8273	2702965.4917	88°10'16.7"	30°21'04.9"	0.99995207	1°10'12.811"
48	498994.8273	2702965.4917	88°10'16.7"	30°21'04.9"	0.99995207	1°10'12.811"
49	498994.8273	2702965.4917	88°10'16.7"	30°21'04.9"	0.99995207	1°10'12.811"
50	498994.8273	2702965.4917	88°10'16.7"	30°21'04.9"	0.99995207	1°10'12.811"
51	498994.8273	2702965.4917	88°10'16.7"	30°21'04.9"	0.99995207	1°10'12.811"
52	498994.8273	2702965.4917	88°10'16.7"	30°21'04.9"	0.99995207	1°10'12.811"
53	498994.8273	2702965.4917	88°10'16.7"	30°21'04.9"	0.99995207	1°10'12.811"
54	498994.8273	2702965.4917	88°10'16.7"	30°21'04.9"	0.99995207	1°10'12.811"
55	498994.8273	2702965.4917	88°10'16.7"	30°21'04.9"	0.99995207	1°10'12.811"
56	498994.8273	2702965.4917	88°10'16.7"	30°21'04.9"	0.99995207	1°10'12.811"
57	498994.8273	2702965.4917	88°10'16.7"	30°21'04.9"	0.99995207	1°10'12.811"
58	498994.8273	2702965.4917	88°10'16.7"	30°21'04.9"	0.99995207	1°10'12.811"
59	498994.8273	2702965.4917	88°10'16.7"	30°21'04.9"	0.99995207	1°10'12.811"
60	498994.8273	2702965.4917	88°10'16.7"	30°21'04.9"	0.99995207	1°10'12.811"
61	498994.8273	2702965.4917	88°10'16.7"	30°21'04.9"	0.99995207	1°10'12.811"
62	498994.8273	2702965.4917	88°10'16.7"	30°21'04.9"	0.99995207	1°10'12.811"
63	498994.8273	2702965.4917	88°10'16.7"	30°21'04.9"	0.99995207	1°10'12.811"
64	498994.8273	2702965.4917	88°10'16.7"	30°21'04.9"	0.99995207	1°10'12.811"
65	498994.8273	2702965.4917	88°10'16.7"	30°21'04.9"	0.99995207	1°10'12.811"
66	498994.8273	2702965.4917	88°10'16.7"	30°21'04.9"	0.99995207	1°10'12.811"
67	498994.8273	2702965.4917	88°10'16.7"	30°21'04.9"	0.99995207	1°10'12.811"
68	498994.8273	2702965.4917	88°10'16.7"	30°21'04.9"	0.99995207	1°10'12.811"
69	498994.8273	2702965.4917	88°10'16.7"	30°21'04.9"	0.99995207	1°10'12.811"
70	498994.8273	2702965.4917	88°10'16.7"	30°21'04.9"	0.99995207	1°10'12.811"
71	498994.8273	2702965.4917	88°10'16.7"	30°21'04.9"	0.99995207	1°10'12.811"
72	498994.8273	2702965.4917	88°10'16.7"	30°21'04.9"	0.99995207	1°10'12.811"
73	498994.8273	2702965.4917	88°10'16.7"	30°21'04.9"	0.99995207	1°10'12.811"
74	498994.8273	2702965.4917	88°10'16.7"	30°21'04.9"	0.99995207	1°10'12.811"
75	498994.8273	2702965.4917	88°10'16.7"	30°21'04.9"	0.99995207	1°10'12.811"
76	498994.8273	2702965.4917	88°10'16.7"	30°21'04.9"	0.99995207	1°10'12.811"
77	498994.8273	2702965.4917	88°10'16.7"	30°21'04.9"	0.99995207	1°10'12.811"
78	498994.8273	2702965.4917	88°10'16.7"	30°21'04.9"	0.99995207	1°10'12.811"
79	498994.8273	2702965.4917	88°10'16.7"	30°21'04.9"	0.99995207	1°10'12.811"
80	498994.8273	2702965.4917	88°10'16.7"	30°21'04.9"	0.99995207	1°10'12.811"
81	498994.8273	2702965.4917	88°10'16.7"	30°21'04.9"	0.99995207	1°10'12.811"
82	498994.8273	2702965.4917	88°10'16.7"	30°21'04.9"	0.99995207	1°10'12.811"
83	498994.8273	2702965.4917	88°10'16.7"	30°21'04.9"	0.99995207	1°10'12.811"
84	498994.8273	2702965.4917	88°10'16.7"	30°21'04.9"	0.99995207	1°10'12.811"
85	498994.8273	2702965.4917	88°10'16.7"	30°21'04.9"	0.99995207	1°10'12.811"
86	498994.8273	2702965.4917	88°10'16.7"	30°21'04.9"	0.99995207	1°10'12.811"
87	498994.8273	2702965.4917	88°10'16.7"	30°21'04.9"	0.99995207	1°10'12.811"
88	498994.8273	2702965.4917	88°10'16.7"	30°21'04.9"	0.99995207	1°10'12.811"
89	498994.8273	2702965.4917	88°10'16.7"	30°21'04.9"	0.99995207	1°10'12.811"
90	498994.8273	2702965.4917	88°10'16.7"	30°21'04.9"	0.99995207	1°10'12.811"
91	498994.8273	2702965.4917	88°10'16.7"	30°21'04.9"	0.99995207	1°10'12.811"
92	498994.8273	2702965.4917	88°10'16.7"	30°21'04.9"	0.99995207	1°10'12.811"
93	498994.8273	2702965.4917	88°10'16.7"	30°21'04.9"	0.99995207	1°10'12.811"
94	498994.8273	2702965.4917	88°10'16.7"	30°21'04.9"	0.99995207	1°10'12.811"
95	498994.8273	2702965.4917	88°10'16.7"	30°21'04.9"	0.99995207	1°10'12.811"
96	498994.8273	2702965.4917	88°10'16.7"	30°21'04.9"	0.99995207	1°10'12.811"
97	498994.8273	2702965.4917	88°10'16.7"	30°21'04.9"	0.99995207	1°10'12.811"
98	498994.8273	2702965.4917	88°10'16.7"	30°21'04.9"	0.99995207	1°10'12.811"
99	498994.8273	2702965.4917	88°10'16.7"	30°21'04.9"	0.99995207	1°10'12.811"
100	498994.8273	2702965.4917	88°10'16.7"	30°21'04.9"	0.99995207	1°10'12.811"



PREPARED BY:
L.D. BRADLEY LAND SURVEYORS
5773 NORMANDY BOULEVARD
JACKSONVILLE, FLORIDA 32205
PHONE (904) 786-6400 FAX (904) 786-1479
LICENSED BUSINESS NO. 6888